

## *Twenty-third Sunday after Pentecost*

**November 13, 2022**

9:30 a.m. Adult & Youth Sunday School

10:30 a.m. Worship in the Sanctuary

*Masks are optional but available in the narthex for anyone who feels more comfortable taking that precaution for themselves or on behalf of others.*



### **ANNOUNCEMENTS**

#### **PRELUDE**

#### **\*CONFESSION AND FORGIVENESS**

P Blessed be the holy Trinity, † one God, who redeems us in Christ Jesus, whose steadfast love endures forever.

**C Amen.**

P Let us confess our sin in the presence of God and of one another.

P Most merciful God,

**C we confess that we have sinned against you and our neighbors. We have ignored voices that call for your justice. We have neglected actions that witness to your righteousness. We have spoken and acted in ways that disrupt your beloved community. We truly repent of things we have done and left undone. For the sake of Jesus Christ, have mercy on us. Restore our troubled spirits, so that we may live in newness, follow the way of the Spirit, and build up the body of Christ. Amen.**

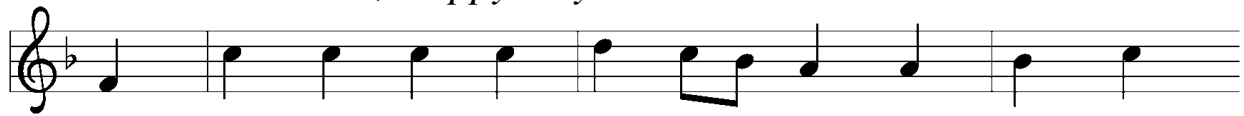
P Rejoice and be glad! God hears the prayers of all who cry out, and restores us to life through the death and resurrection of Jesus Christ. Therefore our sins are forgiven, in the name of the Father, Son +, and Holy Spirit.

**C Amen.**

**\*OPENING HYMN**

*Oh, Happy Day When We Shall Stand*

ELW # 441



1 Oh, hap - py day when we shall stand a - mid the  
2 Oh, bless - ed day when Christ shall come and show him -  
3 Oh, what a might - y rush - ing flood of joy and  
4 O Lord, your grace is ev - 'ry - thing; your love has



heav'n-ly throng; and sing with hosts from ev - 'ry land the  
self as Lord, and thou - sands meet in their new home which  
love and peace will roll down o - ver us with good and  
made us free to stand a - mong the saints and sing the



new ce - les - tial song, the new ce - les - tial song.  
Je - sus has pre - pared, which Je - sus has pre - pared.  
bless - ed - ness and grace, and bless - ed - ness and grace.  
glo - ry that we see, the glo - ry that we see.

Text: Wilhelm A. Wexels, 1797–1866; tr. composite  
Music: LOBT GOTT, IHR CHRISTEN, Nikolaus Herman, 1480–1561  
Text © 1958, 1978 Augsburg Fortress

Duplication in any form prohibited without permission or valid license from copyright administrator.

**GREETING**

P The grace of our Lord Jesus Christ, the love of God, and the communion of the Holy Spirit be with you all. **C And also with you.**

**KYRIE**

P Kyrie eleison: **C Lord, have mercy.**

P Christe eleison: **C Christ, have mercy.**

P Kyrie eleison: **C Lord, have mercy.**

**\*PRAYER OF THE DAY**

P *Let us pray ...* O God, the protector of all who trust in you, without you nothing is strong, nothing is holy. Embrace us with your mercy, that with you as our ruler and guide, we may live through what is temporary without losing what is eternal, through Jesus Christ, our Savior and Lord. **C Amen.**

**FIRST READING: Malachi 4:1-2a**

<sup>1</sup>See, the day is coming, burning like an oven, when all the arrogant and all evildoers will be stubble; the day that comes shall burn them up, says the LORD of hosts, so that it will leave them neither root nor branch. <sup>2a</sup>But for you who revere my name the sun of righteousness shall rise, with healing in its wings.

L The word of the Lord. **C Thanks be to God.**

**PSALM 98 (read responsively)**

<sup>1</sup>Sing a new song to the LORD, who has done marvelous things, whose right hand and holy arm have won the victory.

<sup>2</sup>**O LORD, you have made known your victory, you have revealed your righteousness in the sight of the nations.**

<sup>3</sup>You remember your steadfast love and faithfulness to the house of Israel; all the ends of the earth have seen the victory of our God.

<sup>4</sup>**Shout with joy to the LORD, all you lands; lift up your voice, rejoice, and sing.**

<sup>5</sup>Sing to the LORD with the harp, with the harp and the voice of song.

<sup>6</sup>**With trumpets and the sound of the horn shout with joy before the king, the LORD.**

<sup>7</sup>Let the sea roar, and all that fills it, the world and those who dwell therein.

<sup>8</sup>**Let the rivers clap their hands, and let the hills ring out with joy before the LORD, who comes to judge the earth.**

<sup>9</sup>The LORD will judge the world with righteousness and the peoples with equity.

**SECOND READING: 2 Thessalonians 3:6-13**

<sup>6</sup>Now we command you, beloved, in the name of our Lord Jesus Christ, to keep away from believers who are living in idleness and not according to the tradition that they received from us. <sup>7</sup>For you yourselves know how you ought to imitate us; we were not idle when we were with you, <sup>8</sup>and we did not eat anyone's bread without paying for it; but with toil and labor we worked night and day, so that we might not burden any of you. <sup>9</sup>This was not because we do not have that right, but in order to give you an example to imitate. <sup>10</sup>For even when we were with you, we gave you this command: Anyone unwilling to work should not eat. <sup>11</sup>For we hear that some of you are living in idleness, mere busybodies, not doing any work. <sup>12</sup>Now such persons we command and exhort in the Lord Jesus Christ to do their work quietly and to earn their own living. <sup>13</sup>Brothers and sisters, do not be weary in doing what is right.

L The word of the Lord. **C Thanks be to God.**

**\*Gospel:** Luke 21:5-19

The holy gospel according to Luke.

**Glory to you, O Lord.**

<sup>5</sup>When some were speaking about the temple, how it was adorned with beautiful stones and gifts dedicated to God, [Jesus] said, <sup>6</sup>“As for these things that you see, the days will come when not one stone will be left upon another; all will be thrown down.”

<sup>7</sup>They asked him, “Teacher, when will this be, and what will be the sign that this is about to take place?” <sup>8</sup>And he said, “Beware that you are not led astray; for many will come in my name and say, ‘I am he!’ and, ‘The time is near!’ Do not go after them.

<sup>9</sup>“When you hear of wars and insurrections, do not be terrified; for these things must take place first, but the end will not follow immediately.” <sup>10</sup>Then he said to them, “Nation will rise against nation, and kingdom against kingdom; <sup>11</sup>there will be great earthquakes, and in various places famines and plagues; and there will be dreadful portents and great signs from heaven.

<sup>12</sup>“But before all this occurs, they will arrest you and persecute you; they will hand you over to synagogues and prisons, and you will be brought before kings and governors because of my name. <sup>13</sup>This will give you an opportunity to testify. <sup>14</sup>So make up your minds not to prepare your defense in advance; <sup>15</sup>for I will give you words and a wisdom that none of your opponents will be able to withstand or contradict. <sup>16</sup>You will be betrayed even by parents and brothers, by relatives and friends; and they will put some of you to death. <sup>17</sup>You will be hated by all because of my name. <sup>18</sup>But not a hair of your head will perish. <sup>19</sup>By your endurance you will gain your souls.”

P The Gospel of the Lord. **C Praise to you, O Christ.**

**HOMILY**

*Peggy Steinfurth*



1 Soon and ver - y soon  
 2 No more cry - in' there, we are goin' to see the King,  
 3 No more dy - in' there,  
 4 Soon and ver - y soon



soon and ver - y soon  
 no more cry - in' there, we are goin' to see the King,  
 no more dy - in' there,  
 soon and ver - y soon



soon and ver - y soon  
 no more cry - in' there, we are goin' to see the King.  
 no more dy - in' there,  
 soon and ver - y soon



Hal - le - lu - jah, hal - le - lu - jah, we're goin' to see the King!

Coda after stanza 4



Hal - le - lu - jah, hal - le - lu -



jah, hal - le - lu - jah, hal - le - lu - jah.

Text: Andraé Crouch, b. 1945

Music: VERY SOON, Andraé Crouch

Text and music © 1976 Bud John Songs, Inc./Crouch Music, admin. EMI Christian Music Publishing

Duplication in any form prohibited without permission or valid license from copyright administrator.

## **\*CREED**

P Let us confess our faith through the words of the Apostles' Creed.

**C I believe in God, the Father almighty, creator of heaven and earth.**

**I believe in Jesus Christ, God's only Son, our Lord, who was conceived by the Holy Spirit, born of the virgin Mary, suffered under Pontius Pilate, was crucified, died, and was buried; he descended to the dead.\* On the third day he rose again; he ascended into heaven, he is seated at the right hand of the Father, and he will come to judge the living and the dead.**

**I believe in the Holy Spirit, the holy catholic church, the communion of saints, the forgiveness of sins, the resurrection of the body, and the life everlasting. Amen.**

## **\*PRAYERS OF THE CHURCH**

A United with your saints across time and place, we pray for our shared world.

A Reviving God, keep your church active in its mission and ministry. Encourage bishops, deacons, pastors, and lay leaders to risk boldly in their proclamation and fill them with wisdom and endurance for challenging times. Lord, in your mercy, **C receive our prayer.**

A Renewing God, as the northern hemisphere prepares for winter, make us mindful of the ordered beauty of your creation. Teach us to treasure cycles of rest and new life. Help us care for what you have made. Lord, in your mercy, **C receive our prayer.**

A Loving God, accompany all who make sacrifices for the sake of others. Safeguard first responders and active duty military personnel. Grant peace to veterans and heal any wounds in body, mind, or spirit. Lord, in your mercy, **C receive our prayer.**

A Healing God, your people cry out to you. Sustain doctors, nurses, and hospital personnel in their tireless work. Uphold mental health professionals and those in their care. May the sun of righteousness rise on all who are sick. Lord, in your mercy, **C receive our prayer.**

A Uniting God, unite this assembly in its shared mission and ministry for the sake of the gospel. Highlight ways we can better work together and give us patience to work through disagreement. Lord, in your mercy, **C receive our prayer.**

A Consoling God, abide with all who grieve for loved ones who have died. Comfort us with the promise of resurrection and new life with you. Lord, in your mercy, **C receive our prayer.**

A Accept these prayers, gracious God, and those known only to you; through Jesus Christ, our Lord. **C Amen.**

## LORD'S PRAYER

P Lord, remember us in your kingdom, and teach us to pray:

**C Our Father in heaven, hallowed be your name, your kingdom come, your will be done, on earth as in heaven. Give us today our daily bread. Forgive us our sins as we forgive those who sin against us. Save us from the time of trial and deliver us from evil. For the kingdom, the power, and the glory are yours, now and forever. Amen.**

## BLESSING

P. The God of peace, who creates all things and calls them good, who makes us alive in Jesus, and who breathes on us the Spirit of hope, ✠ bless you now and forever.

**C Amen.**

## \*SENDING SONG

### *Built on a Rock*

*ELW # 652*



1 Built on a rock the church shall stand, e - ven when stee - ples are  
2 Sure - ly, in tem - ples made with hands God the Most High is not  
3 Christ builds a house of liv - ing stones: we are his own hab - i -  
4 Yet in this house, an earth - ly frame, Je - sus the chil - dren is  
5 Through all the pass - ing years, O Lord, grant that, when church bells are



fall - ing; crum - bled have spires in ev - 'ry land, bells still are  
dwell - ing— high in the heav'ns his tem - ple stands, all earth - ly  
ta - tion; he fills our hearts, his hum - ble thrones, grant - ing us  
bless - ing; hith - er we come to praise his name, faith in our  
ring - ing, man - y may come to hear your Word, who here this



chim - ing and call - ing— call - ing the young and old to rest, call - ing the  
tem - ples ex - cel - ling. Yet God who dwells in heav'n a - bove deigns to a -  
life and sal - va - tion. Where two or three will seek his face, he in their  
Sav - ior con - fess - ing. Je - sus to us his Spir - it sent, mak - ing with  
prom - ise is bring - ing: "I know my own, my own know me; you, not the



souls of those dis - tressed, long - ing for life ev - er - last - ing.  
bide with us in love, mak - ing our bod - ies his tem - ple.  
midst will show his grace, bless - ings up - on them be - stow - ing.  
us his cov - e - nant, grant - ing his chil - dren the king - dom.  
world, my face shall see; my peace I leave with you. A - men."

Text: Nikolai F. S. Grundtvig, 1783–1872; tr. Carl Doving, 1867–1937, adapt.  
Music: KIRKEN DEN ER ET GAMMEL HUS, Ludvig M. Lindeman, 1812–1887  
Text © 1958 *Service Book and Hymnal*, admin. Augsburg Fortress

Duplication in any form prohibited without permission or valid license from copyright administrator

## Dismissal

P Go in peace. Be a blessing in the world. **C Thanks be to God.**

**Please be advised that worship services are recorded and/or  
live-streamed on social media.**

**Today's Altar Flowers** are placed to the Glory of God and in memory of James and Erdene Smith by their family.

**Serving God and Us**

Our Ministers - the People of St. Matthew

Our Pastor – Rev. Traci Marriott

Our Pianist – Dr. Adam Smith

Our Organist – Mary Nelson

Our Missionary Family – On Eagle's Wings, Elizabeth Hendrickson

Our Administrative Assistant – Lori Tremmel

Our Assistant Administrative Assistant – Laura Orzeck

Our Sexton – Phil Claar

Our Lector – Nell Snyder

Our Assisting Minister – not needed

Our Acolytes – Calleigh Wright

Our Altar Guild – Janet Stewart, Elaine Buchar

Our Usher – Melissa Fetzer

Our Audio/Video Tech – Camden Kuster

Our Offering Counters – Jim Barley, Beth Garner

**Fourth Quarter Ventures in Faith to “*United Lutheran Seminaries*”**



**MEETING  
NOTICE!**

There will be a special Congregational Meeting held on Sunday, November 20, 2022, following the worship service. This letter fulfills the constitutional requirements of ten (10) days notice before the meeting and notice in the bulletin for two (2) Sundays, including the day of the vote.

The meeting is being held to authorize the council to sell the property at 106 E. Third Street, Williamsburg. This property is a bequest from the estate of Fred A. Smith. Per his will, the net proceeds from the sale of the house have been designated for use in our building fund. We will also vote on who will be authorized to sign any legal documents in the transaction of this sale.

If you have any questions, contact Melissa Fetzer at 814-793-2735.



## SERVING GOD AND US FOR NOVEMBER

Date	November 20	November 27
<b>Acolytes</b>	<b>Gavin Kuster Norah Kuster Ben Decker</b>	<b>Lily &amp; Lucy Lightner</b>
<b>Lectors</b>	<b>Youth</b>	<b>Jane Hoenstine</b>
<b>Altar Guild</b>	Janet Stewart Elaine Buchart	Janet Stewart Elaine Buchart
<b>Offering Counters</b>	<b>Beth Garner Jim Barley</b>	<b>Beth Garner Jim Barley</b>
<b>Audio/Video</b>	Camden Kuster	Camden Kuster
<b>Ushers</b>	<b>Tina Harclerode</b>	<b>Martie Gilbert</b>

### Martinsburg Community Meal

This coming Monday, November 14th, St. Matthew is assisting the Church of God in the monthly community meal. The cooks could use your help in the community center at the Church of God:

Sunday, November 13th, following worship, to begin preparing the meal  
Monday, November 14th, 11AM, to continue meal preparations

Dinner will be served between 5PM and 6:30PM on Monday; help serving and cleaning up will be greatly appreciated. If you have any questions, please direct them to Linda Smith who is coordinating the effort with the Church of God.

### Martinsburg Food Pantry

Volunteers from Mt. Pleasant United Church of Christ will be assisting the regular helpers with food distributions on Thursday, November 17 from 9:00 a.m. until 11:00 a.m.

Several churches will provide Thanksgiving dinner to those that can't prepare a dinner themselves.

**Food most needed for November are:** Juice/Beverages, Fruit, Cereal, Mashed Potatoes, Gravy, Stuffing Mix, and Tomato Sauce. Many Thanks! *Linda Smith*

# BUILDING A CULTURE OF GENEROSITY

## SEEK IN PRAYER GOD'S WILL FOR YOUR GIVING

What do we tend to do when the church asks for our support?

The common tendency is to consult our budget, our bills, our income, our tax situation, our investments, our spouse, our accountant, etc., and then determine what we can afford or spare.

Instead, as Christians we are invited to seek and discern God's will for us in our giving. A Christian commitment can really only be made on our knees, seeking God's will in fervent prayer.

Prayer is an integral part of the Christian life. As with any other of the life choices we face, the decision of how much to give is most faithfully made after first seeking in prayer what God would have us do and listening for the voice of God in the prayer conversation.

The generosity we show towards the church has a practical effect on both our own budget and the church's ability to carry out its ministry and mission. Yet, giving to the church is not primarily a financial transaction. Instead, giving to the church is a spiritual discipline that we undertake as part of our ongoing conversation with God.

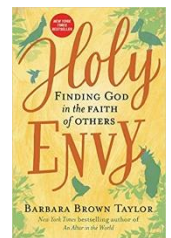
## November Book Study—"Holy Envy" by Barbara Brown Taylor

Join in a series of discussions on "Holy Envy: Finding God in the Faith of Others" narrating how teaching a World Religions class at a local college helped Taylor, a Christian minister, delve deeper into her own faith. Tuesdays at 4 PM on Zoom.

11/15 Introduction through Chapter 4

11/22 Chapters 5-8

11/29 Chapters 9-Epilogue



## **This Week at St. Matthew:**

**814-793-2413**

### **Office Hours**

Pastor Traci – Wed. 1:00 – 4:00 p.m.

Lori Tremmel – Mon. – Fri. 9:00 a.m. - 12:00 p.m.

### **This Week Events**

- Today** – Worship in Sanctuary 10:30 a.m.  
Help prepare Community Meal following worship
- Monday** – Help set up Community Meal at Church of God at 11:00 a.m.  
Community Meal at Church of God, St. Matthew Co-Hosting  
5:00-6:30 p.m.  
Scouts, Scout Rooms 6:00 p.m.
- Tuesday** - Book Study 4:00 p.m. via Zoom
- Wednesday** – Yoga, Fellowship Hall 5:00 p.m.
- Sunday** – **Christ the King/Youth Sunday**  
Sunday School 9:30 a.m.  
Worship in Sanctuary 10:30 a.m.  
Special Congregational Meeting following Worship  
December Messenger Article Deadline

### **Mitten Tree**

The first Sunday in Advent, November 27<sup>th</sup>, you will see our annual Mitten Tree in the narthex. Please be thinking as you shop, and bring school-age children's mittens, gloves, hats, scarves, earmuffs or socks to be hung on the Mitten Tree from November 27<sup>th</sup> until December 18<sup>th</sup>. These will be distributed by the school nurses at the Spring Cove Elementary Schools for needy children. Donations of money can be given by marking a **pew envelope "Mitten Tree"**. Let's help children have a warmer Winter!

### **Cove Christmas Love**

It's time to think about children who will get very little or nothing for Christmas. These children within the area covered by the Martinsburg Association of Churches will receive **new** toys, books and blankets with the help of contributions from people in the community.

Please bring your donations to the church and place in the Christmas box located in the Narthex. Monetary contributions are also welcome. Checks are to be made out to "Cove Christmas Love" and placed in the offering plate.

All donations of gifts and monetary contributions are due by Monday, December 12, 2022. ***Social Ministry Committee***

**Prayers are needed for our homebound:** Carl Alexy, Vivian Beach, Verna Blough, Fred Brandenburg, Mary Creps, Gerry Girolami, Betty Helsel, Jere Hess, Ruth Johnson, Audrey & Dan Kensinger, Janet Kreider, Ginny Sell, Dan Sinal, Don Smith, Bill Stahl, Joy Williams.

**Prayer Concerns:** Amy & Family, Pastor Denise Arpino, Randy Barrett, Verna Blough, David Bolger, Bonnie Brobst, Diane Cappel, Greg Comer, Terry & Cathy Creek, Tim Flaugh, Brian Fleck, Jim Fritz, Dan Hershberger, Marilyn Horton, Darren Kreutzer, Carrie Lively, Kristen Malloy, Pastor Traci Marriott, Karrie McCall & Family, Betty McDowell, Kay McGraw, Liam McGregor, Rick McIntyre, Aunt Mica, Charles Minnick & Family, Nathan, Elaine Ormsby, Deb Peters, Paul Ruth, Barbara Smith, Luther Steele, Cindy Thomas, Rev. Jack Timm, Susan Werner, John Werner, Jean White, Joel Widmann, Pete Williams, Jody Zelanko, and for our **Missionaries: Rev. Lesley Hand, On Eagle's Wings, Elizabeth Hendrickson.**

**Our college students:** Christopher Bush, Olivia Day, Camryn Gates.

**Those Serving in the Army Overseas:** Nathan Smith (Germany), Melody Estep.



Dr. Adam Smith, Piano

# AN ADVENT CONCERT

7PM - Monday, December 19th  
*St. Matthew Lutheran Church*  
115 East Penn Street, Martinsburg  
Free Admission - Free Will Offering to Benefit  
*Camp Sequanota*



# Snow Camp 2023

*"Come to the Table"*

Friday-Sunday, January 27-29  
Camp Sequanota, Jennerstown PA  
6th - 12th Grade

Games, Crafts, Food, Sledding, Worship, & Learning  
Accommodations in Sequanota's Winterized Cabins  
Register from December 15 to January 20 at [www.sequanota.com](http://www.sequanota.com)

\$80-includes food, lodging, materials  
*Families are asked to pay \$10: St. Matthew will cover the rest.*

Please contact Pastor Traci with any questions.  
**\*\*Adult Helper(s) Wanted!\*\***



## 2022 Veterans

On Sunday, November 13<sup>th</sup>, St. Matthew will honor veterans who have served in the military. All veterans will be honored, including inactive and deceased.

Dale Allison*	Cpt. Donald Grove	Scott Paul
Pete Barley*	Robert V. Gunnett	Timothy Perry*
Alan Brubaker	Bob Guyer	Boyd E. Piper *
Lester Buchart*	Colin Guyer	Walter Piper
Bryan Bush	Kyle Guyer	John Replogle
Jim Calvert*	Mark Guyer	Paul E. Rummel*
Cletus Carberry*	Greg Haffling	John Sell*
Clyde Claycomb*	Charles Henzler	Dan Sinal
Robert "Bob" Creps*	Dean Hinish*	Elwood Smith*
Michael Corcoran	Rodger Hoover	Elvie Smith Jr.*
Kermit Daniel*	Dante Iachini*	Nathan Smith
LeMar Daniel*	Joseph Iwanski*	Sheldon O. Smith*
Edward DeAngelis*	Charles Kreider*	John Lee Snyder
P. Robert Dickson	Henry Lamborn	Michael L. Snyder
Melody Estep	Mike Lamborn	William Stahl
Tom Fishburn	David Lehman	Jim Stewart
Andy Freyer*	Les Loomis	Ralph Stouffer*
Matt Freyer	Kenneth Long*	William Straesser*
Donald Garner*	Liam McGregor	John Szymckec*
Jeff Garner	Richard A. McGraw*	Milo "Bud" Uber*
George Gilbert Sr	Harold Mountain*	Laura Webb
George Gilbert Jr	Seth Orczeck	Jay Webb
Harold Grove		James Weyant*

**\*Deceased**



**St. Matthew now has a new email address:**

**[stmatthewmartinsburg@gmail.com](mailto:stmatthewmartinsburg@gmail.com)**

Please send all correspondence to this address.

We will no longer use AOL.



**Dear Members of St. Matthew Lutheran Church:**

The 2022 Annual Congregational Meeting is scheduled for Sunday, December 11<sup>th</sup> at 10:30 a.m. Here in, and for your review, is a copy of the 2023 Ministry Proposal (Congregational Budget) for St. Matthew Lutheran Church.

The budget process begins with all committees providing their budget requests to the finance committee, who then review the individual proposals and ultimately agree on a budget. Church Council then reviews the budget, and in this case, approved it at their November 8<sup>th</sup> meeting.

**The congregation will also be asked to approve the following 2023 recommendations for Venture in Faith, which are the same as 2022:**

- 1) The first quarter will go to local needs.
- 2) The second quarter is for Youth and Camping
- 3) The third quarter will go to On Eagle's Wings & Holy Family Lutheran Church & Rocky Boy Ind. Res.
- 4) The fourth quarter is for the United Lutheran Seminaries both in Gettysburg and Philadelphia.

**The congregation will also be asked to approve the 2023 recommendations for Special Envelopes, which are identical to what was used in 2022:**

- 1) Easter envelopes go to the Breezewood Truck Ministry.
- 2) Special envelopes for Children's Sunday go to Good Shepherd children's home.
- 3) Harvest Home envelopes go to ALSM (ILUMIN).
- 4) The special envelopes for Blanket Sunday go to Lutheran World relief.

If, after reviewing the budget and the recommendations for Ventures in Faith and Special Envelopes, if you have questions or concerns, there will be a **question and answer session on Sunday, November 27<sup>th</sup> and December 4<sup>th</sup> following the 10:30 a.m. worship service in the Sanctuary.** You may also contact Jim Barley by phone (814-793-4623) or by email ([jimbarley@gmail.com](mailto:jimbarley@gmail.com)).

*In response to God's love, St. Matthew Lutheran Church  
Shares God's word and serves all people.*

*Jim Barley  
Finance Committee Chairperson*

St. Matthew Lutheran Church Proposed Budget 2023

	2023	2022	2021	2020	2019	2018	2017
	Proposed Budget	Budget	Actual	Actual	Actual	Actual	Actual
<b>MINISTRY OF THE PASTOR</b>							
Base Salary/Housing Allowance	\$ 60,470.00	\$57,350.00	\$57,281.04	\$56,073.12	\$53,815.12	\$10,724.32	\$0.00
Social Security Allowance	\$ 4,626.00	\$4,387.00	\$4,290.00	\$4,198.08	\$4,039.92	\$652.84	\$0.00
Transitional Pastors Stipend						\$24,000.75	\$26,925.00
Total Compensation	\$ 65,096.00	\$61,737.00	\$61,571.04	\$60,271.20	\$57,855.04	\$35,377.91	\$26,925.00
Pension Contribution	\$ 7,812.00	\$7,409.00	\$7,244.52	\$7,088.52	\$6,822.93	\$0.00	\$0.00
Medical	\$ 10,936.00	\$9,878.00	\$9,443.16	\$8,831.46	\$7,817.92	\$2,622.64	\$0.00
Disability and Death	\$ 1,107.00	\$1,358.00	\$1,328.16	\$1,092.84	\$1,535.03	\$9.00	\$0.00
Disability Insurance Supplement	\$ -			\$0.00	\$0.00	\$0.00	\$0.00
Retirement Support	\$ -			\$413.52	\$397.44	\$0.00	\$0.00
Total Benefits	\$ 19,855.00	\$18,645.00	\$18,015.84	\$17,426.34	\$16,573.32	\$2,631.64	\$0.00
<b>TOTAL COMPENSATION &amp; BENEFITS OF THE PASTOR</b>	\$ 84,951.00	\$80,382.00	\$79,586.88	\$77,697.54	\$74,428.36	\$38,009.55	\$26,925.00
<b>PROFESSIONAL REIMBURSEMENT</b>							
Automobile Reimbursement	\$ 2,000.00	\$3,000.00	\$940.46	\$671.95	\$2,269.68	\$317.95	\$400.38
Continuing Ed, Books & Periodicals	\$ 1,000.00	\$1,000.00	\$657.29	\$935.50	\$1,002.74	\$77.16	\$588.53
Assembly/Conference Expense	\$ 600.00	\$600.00	\$40.00	\$25.00	\$461.00	\$143.00	\$426.00
Other Professional Exp	\$ 500.00	\$1,100.00	\$90.96	\$0.00	\$1,397.38	\$18.88	\$12.45
Transition Pastors Mileage and Lodging	\$ -					\$9,243.52	\$10,785.42
<b>TOTAL PROFESSIONAL REIMBURSEMENT</b>	\$ 4,100.00	\$5,700.00	\$1,728.71	\$1,632.45	\$5,130.80	\$9,800.51	\$12,212.78
<b>PARISH ADMINISTRATION</b>							
Parish Administrative Assistant	\$ 33,600.00	\$31,992.00	\$31,897.00	\$31,200.00	\$30,599.94	\$29,618.00	\$26,367.26
Employer's SS Taxes Parish Admin Ass't	\$ 2,570.00	\$2,447.00	\$2,273.44	\$2,227.35	\$2,224.38	\$2,126.44	\$1,847.69
Employee Benefits Parish Admin Ass't	\$ 11,791.00	\$13,867.00	\$13,641.24	\$13,548.30	\$13,093.08	\$14,161.66	\$11,429.07
Assistant to Administrative Assistant	\$ 1,008.00	\$3,000.00	\$1,280.81	\$641.37	\$2,064.51	\$1,697.25	
Employer's SS Taxes Ass't Admin Ass't	\$ 77.00	\$230.00	\$92.57	\$57.23	\$161.34	\$112.45	
Office Supplies	\$ 2,000.00	\$2,000.00	\$2,017.65	\$2,132.07	\$2,956.78	\$2,586.16	\$2,718.75
Postage	\$ 1,300.00	\$1,000.00	\$1,245.65	\$1,034.48	\$1,381.71	\$1,370.16	\$1,587.89
Telephone	\$ 3,000.00	\$3,000.00	\$2,855.97	\$2,957.12	\$2,927.98	\$2,841.07	\$1,997.98
Maintenance and Repairs	\$ 1,000.00	\$1,800.00	\$0.00	\$822.06	\$3,366.35	\$1,523.26	\$916.58
Computer Program & Updates	\$ 1,750.00	\$1,750.00	\$1,574.85	\$1,049.47	\$1,627.00	\$1,882.91	\$1,894.09
Copier Lease	\$ 2,604.00	\$2,604.00	\$4,134.60	\$4,134.60	\$4,134.60	\$4,150.70	\$3,960.13
Misc. Expenses	\$ 200.00	\$200.00	\$82.67	\$148.84	\$0.00	\$141.70	\$161.88
<b>TOTAL PARISH ADMINISTRATION</b>	\$ 60,900.00	\$63,890.00	\$61,096.45	\$59,952.89	\$64,537.67	\$62,211.76	\$52,881.32

<b>WORSHIP AND MUSIC</b>										
Supply Pastors Compensation	\$ 1,000.00	\$1,000.00	\$350.00	\$290.82	(\$75.00)	\$1,063.14	\$1,575.00			
Organists' Stipends	\$ 9,420.00	\$8,800.00	\$8,150.00	\$7,785.00	\$7,162.40	\$3,950.00	\$4,282.28			
Adult Choir Dir. Stipend		\$2,250.00	\$1,600.00	\$1,100.00	\$250.00	\$0.00	\$0.00			
Organ, Piano, and Carillon	\$ 700.00	\$700.00	\$720.00	\$360.00	\$300.00	\$870.00	\$350.00			
Choir Music	\$ 150.00	\$150.00	\$96.34	(\$50.00)	\$152.60	\$34.67	\$107.24			
Worship Supplies	\$ 1,500.00	\$1,500.00	\$801.50	\$1,841.82	\$2,552.92	\$1,481.25	\$1,807.78			
Devotional Guides	\$ 150.00	\$150.00	\$105.01	\$316.13	\$259.25	\$413.50	\$396.50			
Bulletins	\$ -	\$0.00	\$0.00	\$0.00	\$0.00	\$0.00	\$70.90			
Flower Fund	\$ -	\$300.00	\$0.00	\$33.40	\$0.00	\$21.95	\$90.00			
Journey to Bethlehem	\$ -	\$0.00	\$0.00	\$0.00	\$501.91	\$0.00	\$591.86			
Audio Tech Person	\$ 1,485.00	\$1,375.00	\$1,325.00							
Employer's SS Taxes	\$ 114.00	\$105.00	\$63.10							
<b>TOTAL WORSHIP AND MUSIC</b>	<b>\$ 14,519.00</b>	<b>\$16,330.00</b>	<b>\$13,210.95</b>	<b>\$11,677.17</b>	<b>\$11,104.08</b>	<b>\$7,834.51</b>	<b>\$9,271.56</b>			
<b>EVANGELISM</b>										
Evangelism Projects	\$ 500.00	\$1,300.00	\$435.93	\$246.07	\$229.65	\$298.20	\$255.43			
<b>TOTAL EVANGELISM</b>	<b>\$ 500.00</b>	<b>\$1,300.00</b>	<b>\$435.93</b>	<b>\$246.07</b>	<b>\$229.65</b>	<b>\$298.20</b>	<b>\$255.43</b>			
<b>FELLOWSHIP</b>										
Fellowship Expenses	\$ 1,000.00	\$1,500.00	\$233.07	\$427.58	\$1,195.21	\$1,179.11	\$1,103.23			
<b>TOTAL FELLOWSHIP</b>	<b>\$ 1,000.00</b>	<b>\$1,500.00</b>	<b>\$233.07</b>	<b>\$427.58</b>	<b>\$1,195.21</b>	<b>\$1,179.11</b>	<b>\$1,103.23</b>			
<b>CHRISTIAN EDUCATION</b>										
Synod Assembly (2 delegates)	\$ 400.00	\$400.00	\$80.00	\$0.00	\$292.00	\$286.00	\$378.00			
SCS Christmas Gifts	\$ 100.00	\$100.00	\$42.37	\$0.00	\$0.00	\$38.02	\$80.07			
Vacation Church School	\$ -	\$750.00	\$500.00	\$150.00	\$19.93	\$0.00	\$1,019.41			
The Lutheran	\$ 1,000.00	\$1,200.00	\$622.67	\$971.79	\$1,009.14	\$1,044.98	\$1,071.40			
Curriculum & Supplies	\$ 500.00	\$1,000.00	\$480.26	\$403.35	\$1,287.61	\$538.31	\$812.11			
St. Matthew Youth Events	\$ 500.00	\$500.00	\$172.62	\$22.43	\$205.17	\$0.00	\$11.99			
National Youth Gathering Advisor	\$ -	\$1,000.00	\$0.00	\$0.00	\$0.00	\$1,000.00	\$0.00			
Advent and Lenten Workshop	\$ 200.00	\$200.00	\$54.23	\$0.00	\$0.00	\$0.00	\$0.00			
FBI Background Checks	\$ 100.00	\$100.00	\$119.55	\$35.00	\$58.85	\$61.20	\$16.00			
<b>TOTAL CHRISTIAN EDUCATION</b>	<b>\$ 2,800.00</b>	<b>\$5,250.00</b>	<b>\$2,071.70</b>	<b>\$1,582.57</b>	<b>\$2,872.70</b>	<b>\$2,968.51</b>	<b>\$3,388.98</b>			



	2023	2022	2021	2020	2019	2018	2017
	Proposed Budget	Budget	Actual	Actual	Actual	Actual	Actual
<b>PROPERTY MAINTENANCE</b>							
Insurance	\$ 5,000.00	\$5,500.00	\$4,553.00	\$4,589.00	\$4,286.00	\$7,999.45	\$5,119.00
Electricity	\$ 9,000.00	\$10,000.00	\$7,969.55	\$7,882.13	\$12,599.92	\$13,662.03	\$14,254.45
Janitorial Services	\$ 16,443.00	\$15,405.00	\$12,771.78	\$15,411.80	\$14,867.11	\$14,205.00	\$15,361.10
Employer's SS Taxes	\$ 1,258.00	\$1,178.00	\$1,014.60	\$1,187.74	\$1,179.25	\$1,066.53	\$1,150.17
Repairs and Maintenance	\$ 2,300.00	\$3,500.00	\$2,469.38	\$595.26	\$2,529.08	\$4,762.68	\$2,787.11
Utilities (Water/Sewer/Gas/Garbage)	\$ 4,000.00	\$3,500.00	\$3,606.22	\$3,106.83	\$2,850.06	\$2,572.30	\$2,081.35
Operating Supplies	\$ 1,200.00	\$1,200.00	\$1,108.71	\$985.90	\$760.23	\$596.35	\$1,074.06
Maint Fees (Snow Plowing & Shoveling)	\$ 1,700.00	\$1,700.00	\$1,072.00	\$516.00	\$1,384.00	\$1,754.25	\$1,205.50
Security	\$ 700.00	\$700.00	\$539.88	\$539.88	\$539.88	\$0.00	\$0.00
<b>TOTAL PROPERTY MAINTENANCE</b>	<b>\$ 41,601.00</b>	<b>\$42,683.00</b>	<b>\$35,105.12</b>	<b>\$34,814.54</b>	<b>\$40,995.53</b>	<b>\$46,618.59</b>	<b>\$43,032.74</b>
<b>STEWARDSHIP</b>							
Stewardship Education	\$ 1,000.00	\$1,000.00	\$745.20	\$926.52	\$920.91	\$906.47	\$624.37
Offering Envelopes	\$ 1,000.00	\$1,000.00	\$751.50	\$983.85	\$665.41	\$490.03	\$1,964.41
<b>TOTAL STEWARDSHIP &amp; FINANCE</b>	<b>\$ 2,000.00</b>	<b>\$2,000.00</b>	<b>\$1,496.70</b>	<b>\$1,910.37</b>	<b>\$1,586.32</b>	<b>\$1,396.50</b>	<b>\$2,588.78</b>
<b>SOCIAL MINISTRY</b>							
Social Ministry	\$ 300.00	\$300.00	\$55.86	\$0.00	\$95.54	\$208.08	\$0.00
<b>TOTAL SOCIAL MINISTRY</b>	<b>\$ 300.00</b>	<b>\$300.00</b>	<b>\$55.86</b>	<b>\$0.00</b>	<b>\$95.54</b>	<b>\$208.08</b>	<b>\$0.00</b>
<b>MISCELLANEOUS</b>							
Miscellaneous	\$ 500.00	\$500.00	\$1,107.38	\$178.74	\$411.31	\$393.60	\$332.15
<b>TOTAL MISCELLANEOUS</b>	<b>\$ 500.00</b>	<b>\$500.00</b>	<b>\$1,107.38</b>	<b>\$178.74</b>	<b>\$411.31</b>	<b>\$393.60</b>	<b>\$332.15</b>
<b>TOTAL EXPENSES</b>	<b>\$ 213,171.00</b>	<b>\$ 219,835.00</b>	<b>\$ 196,128.75</b>	<b>\$ 190,119.92</b>	<b>\$ 202,587.17</b>	<b>\$ 170,918.92</b>	<b>\$ 151,991.97</b>
Average Weekly Needed per Budget	53 Sundays	52 Sundays	52 Sundays	52 Sundays	52 Sundays	52 Sundays	53 Sundays
Faith Commitment (Allegheny Synod)	\$ 4,022.00	\$4,227.60	\$4,287.77	\$4,299.48	\$4,096.94	\$4,413.40	\$4,181.47
Note: Faith Commitment Increase is %	0.23%	0.00%	0.00%	0.00%	0.00%	0.00%	0.00%
Note: Budget Increase (Decrease) is %	-3.03%	-1.40%	-0.27%	4.94%	-7.17%	3.56%	2.50%

**Ventures in Faith for 2023**

First quarter will go to local needs; Second quarter is for Youth & Camping; Third quarter OEW's & Holy Family Lutheran Church & Rocky Boy; Fourth quarter is for the United Lutheran Seminaries (Gettysburg & Philadelphia)

**Special Envelopes for 2023**

Easter - Breezewood Truck Ministry.; Children's Sunday - Good Shepherd Children Home.; Harvest Home - ALSM (ILUMIN).; Blanket Sunday - Lutheran World Relief.; Christmas - St. Matthew Current Expenses.