

First Sunday of Advent

November 27, 2022

9:30 a.m. Adult & Youth Sunday School

10:30 a.m. Worship in the Sanctuary



Masks are optional but available in the narthex for anyone who feels more comfortable taking that precaution for themselves or on behalf of others.

ANNOUNCEMENTS

PRELUDE

***CONFESSION AND FORGIVENESS**

P Blessed be the Lord, the God of Israel, who alone does wondrous things.

C Blessed be God's name forever. Amen.

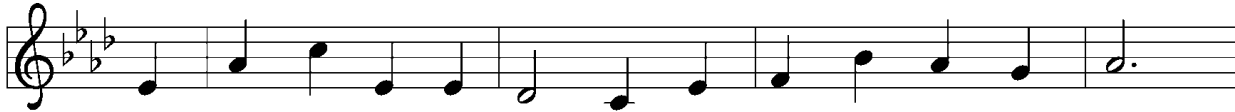
P Beloved, now is the time to wake from sleep. Let us confront our sins, and confess them to the one who is merciful and just.

P God of new beginnings,

C we confess that we have not welcomed your holy reign. We have strayed from your paths. We prepare for war instead of peace. We dishonor one another and your creation. Purify us with your refining fire and set us again on your way of love, that we may bear fruit worthy of repentance, and welcome your coming among us. Amen.

P People of God, a new thing is growing in our midst, a tender branch, a living sign. By water and the Spirit you are joined to this wonder. You have put on ✝ Christ, and your sins have been washed away. Rejoice in the way of the Lord.

C Amen.



1 Re - joice, re - joice, be - liev - ers, and let your lights ap - pear;
 2 The watch - ers on the moun - tain pro - claim the bride - groom near;
 3 The saints, who here in pa - tience their cross and suf - f'ring bore,
 4 Our hope and ex - pec - ta - tion, O Je - sus, now ap - pear;



the eve - ning is ad - vanc - ing, and dark - er night is near.
 go forth as he ap - proach - es with al - le - lu - ias clear.
 shall live and reign for - ev - er when sor - row is no more.
 a - rise, O Sun so longed for, o'er this be - night - ed sphere.



The bride - groom is a - ris - ing and soon is draw - ing nigh.
 The mar - riage feast is wait - ing; the gates wide o - pen stand.
 A - round the throne of glo - ry the Lamb they shall be - hold;
 With hearts and hands up - lift - ed, we plead, O Lord, to see



Up, pray and watch and wres - tle; at mid - night comes the cry.
 A - rise, O heirs of glo - ry; the bride - groom is at hand.
 in tri - umph cast be - fore him their di - a - dems of gold.
 the day of earth's re - demp - tion that sets your peo - ple free!

GREETING

P The grace of our Lord Jesus Christ, the love of God, and the communion of the Holy Spirit be with you all. **C And also with you.**

KYRIE



A Ky - ri - e e - le - i - son: **C** Lord, have mer - cy.
Lord, have mer - cy:



A Chri - ste e - le - i - son: **C** Christ, have mer - cy.
Christ, have mer - cy:



A Ky - ri - e e - le - i - son: **C** Lord, have mer - cy.
Lord, have mer - cy:

HYMN OF PRAISE

Glory to God



☐ Glo-ry to God, glo - ry to God, glo - ry to God in the high - est;



glo - ry to God, glo - ry to God, and peace to God's peo - ple on earth.



☐ Lord God, heav-en - ly king, al-might- y God and Fa- ther, we



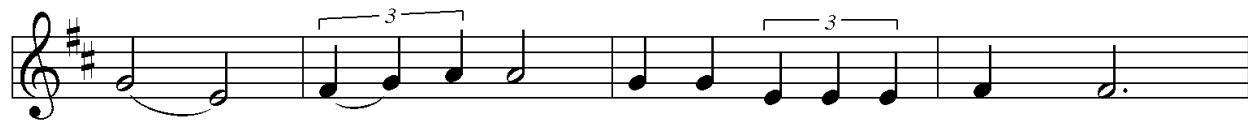
wor-ship you, we give you thanks, we praise you for your glo - ry.



☐ Glo-ry to God, glo - ry to God, glo - ry to God in the high - est;



glo - ry to God, glo - ry to God, and peace to God's peo - ple on earth.



☐ Lord Je - sus Christ, on - ly Son of the Fa - ther,



Lord God, Lamb of God, you take a - way the sin of the



world: have mer - cy on us; you are seat - ed at the



right hand of the Fa - ther: re- ceive our prayer.

C Glo-ry to God, glo-ry to God, glo-ry to God in the high - est;

glo-ry to God, glo-ry to God, and peace to God's peo-ple on earth.

I
II For you a-lone are the Ho - ly One, you a-lone are the Lord,

you a-lone are the Most High, Je - sus Christ, with the Ho - ly

Spir - it, in the glo - ry of God the Fa - ther, A - men.

C Glo-ry to God, glo-ry to God, glo-ry to God in the high - est;

glo-ry to God, glo-ry to God, and peace to God's peo-ple on earth,

and peace to God's peo - ple on earth.

***PRAYER OF THE DAY**

P *Let us pray ...* Stir up your power, Lord Christ, and come. By your merciful protection save us from the threatening dangers of our sins, and enlighten our walk in the way of your salvation, for you live and reign with the Father and the Holy Spirit, one God, now and forever. **C Amen.**

* LIGHTING ADVENT CANDLES

ADVENT LIGHTING HYMN

O Come O Come Emanuel

(vs 1)



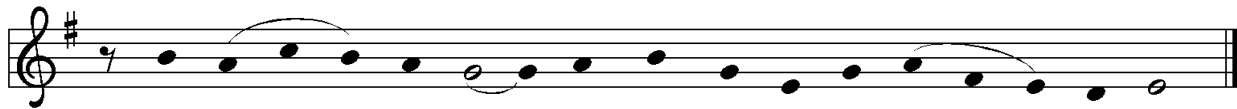
1 O come, O come, Em - man - u - el, and ran - som cap - tive
2 O come, O Wis - dom from on high, em - brac - ing all things
3 O come, O come, O Lord of might, as to your tribes on
4 O come, O Branch of Jes - se, free your own from Sa - tan's



Is - ra - el, that mourns in lone - ly ex - ile here
far and nigh: in strength and beau - ty come and stay;
Si - nai's height in an - cient times you gave the law
tyr - an - ny; from depths of hell your peo - ple save,



un - til the Son of God ap - pear.
teach us your will and guide our way. Re-joyce! Re-joyce!
in cloud, and maj - es - ty, and awe.
and give them vic - t'ry o'er the grave.



Em - man - u - el shall come to you, O Is - ra - el.

FIRST READING: Isaiah 2:1-5

¹The word that Isaiah son of Amoz saw concerning Judah and Jerusalem.

²In days to come the mountain of the LORD's house shall be established as the highest of the mountains, and shall be raised above the hills; all the nations shall stream to it. ³Many peoples shall come and say, "Come, let us go up to the mountain of the LORD, to the house of the God of Jacob; that he may teach us his ways and that we may walk in his paths." For out of Zion shall go forth instruction, and the word of the LORD from Jerusalem. ⁴He shall judge between the nations, and shall arbitrate for many peoples; they shall beat their swords into plowshares, and their spears into pruning hooks; nation shall not lift up sword against nation, neither shall they learn war any more.

⁵O house of Jacob, come, let us walk in the light of the LORD!

L The word of the Lord. **C Thanks be to God.**

PSALM 122 (*read responsively*)

¹I was glad when they said to me, “Let us go to the house of the LORD.”

²**Now our feet are standing within your gates, O Jerusalem.**

³Jerusalem is built as a city that is at unity with itself;

⁴**to which the tribes go up, the tribes of the LORD, the assembly of Israel, to praise the name of the LORD.**

⁵For there are the thrones of judgment, the thrones of the house of David.

⁶**Pray for the peace of Jerusalem: “May they prosper who love you.**

⁷Peace be within your walls and quietness within your towers.

⁸**For the sake of my kindred and companions, I pray for your prosperity.**

⁹Because of the house of the LORD our God, I will seek to do you good.”

SECOND READING: Romans 13:11-14

¹¹Besides this, you know what time it is, how it is now the moment for you to wake from sleep. For salvation is nearer to us now than when we became believers; ¹²the night is far gone, the day is near. Let us then lay aside the works of darkness and put on the armor of light; ¹³let us live honorably as in the day, not in reveling and drunkenness, not in debauchery and licentiousness, not in quarreling and jealousy. ¹⁴Instead, put on the Lord Jesus Christ, and make no provision for the flesh, to gratify its desires.

L The word of the Lord. **C Thanks be to God.**

***GOSPEL ACCLAMATION**



***Gospel: Matthew 24:36-44**

The holy gospel according to Matthew.

Glory to you, O Lord.

[Jesus said to the disciples,] ³⁶“About that day and hour no one knows, neither the angels of heaven, nor the Son, but only the Father. ³⁷For as the days of Noah were, so will be the coming of the Son of Man. ³⁸For as in those days before the flood they were eating and drinking, marrying and giving in marriage, until the day Noah entered the ark, ³⁹and they knew nothing until the flood came and swept them all away, so too will be the coming of the Son of Man. ⁴⁰Then two will be in the field; one will be taken and one will be left. ⁴¹Two women will be grinding meal together; one will be taken and one will be left. ⁴²Keep awake therefore, for you do not know on what day your Lord is coming. ⁴³But understand this: if the owner of the house had known in what part of the night the thief was coming, he would have stayed awake and would not have let his house be broken into. ⁴⁴Therefore you also must be ready, for the Son of Man is coming at an unexpected hour.”

P The Gospel of the Lord. C Praise to you, O Christ.

HOMILY

Pastor Traci



1 Wake, a - wake, for night is fly - ing, the watch-men
2 Zi - on hears the watch-men sing - ing, and all her
3 Glo - ri - a! Let heav'n a - dore you! Let saints and



on the heights are cry - ing; a - wake, Je - ru - sa - lem, at last.
heart with joy is spring-ing. She wakes, she ris - es from her gloom.
an - gels sing be - fore you, with harp and cym-bal's clear-est tone.



Mid - night hears the wel - come voic - es, and at the
Her dear friend comes down, all glo - rious, the strong in
Gates of pearl, twelve por - tals gleam - ing, lead us to



thrill-ing cry re - joic - es: "Come forth, you maid-ens! Night is past.
grace, in truth vic - to - rious: her star is ris'n; her light is come.
bliss be - yond all dream - ing, with an - gel choirs a - round your throne.



Al - le - lu - ia! Rise and pre - pare the feast to share;
Sing ho - san - na! Oh, hear the call! Come one, come all,
of such glo - ry. There we will go: what joy we'll know!



go, meet the bride - groom, who draws near.
and fol - low to the ban - quet hall.
There sweet de - light will ev - er flow.

Text: Philipp Nicolai, 1556–1608; tr. composite
Music: WACHET AUF, Philipp Nicolai
Text © 1999 Augsburg Fortress

Duplication in any form prohibited without permission or valid license from copyright administrator.

***CREED**

A Let us confess our faith through the words of the Apostles' Creed.

C I believe in God, the Father almighty, creator of heaven and earth.

I believe in Jesus Christ, God's only Son, our Lord, who was conceived by the Holy Spirit, born of the virgin Mary, suffered under Pontius Pilate, was crucified, died, and was buried; he descended to the dead.* On the third day he rose again; he ascended into heaven, he is seated at the right hand of the Father, and he will come to judge the living and the dead.

I believe in the Holy Spirit, the holy catholic church, the communion of saints, the forgiveness of sins, the resurrection of the body, and the life everlasting.

Amen

***PRAYERS OF THE CHURCH**

A As we prepare for the fullness of Christ's presence, let us pray for a world that yearns for new hope.

A God of all, your children everywhere cry out for mercy. Awaken the global church to the urgent needs of our time. Break down barriers of culture and custom and unite people of all faiths in your redemptive and healing work. God, in your mercy,

C hear our prayer.

A God of wonder, the earth's beauty and abundance is your gift. Teach us your ways of sharing resources and caring for life. Guard fragile habitats, preserve the wild places, and protect endangered plants and animals. God, in your mercy, **C hear our prayer.**

A God of peace, you judge the nations. Beat our weapons into tools for serving the neighbor. Strengthen the resolve of all who work for an end to war. We pray for lasting peace in the land of Jesus' birth. God, in your mercy, **C hear our prayer.**

A God of lovingkindness, you desire fullness of life for everyone. Fill those who hunger. Comfort the grieving and attend to those near death. Bring help and hope to any who are sick or needing your care. God, in your mercy, **C hear our prayer.**

A God of community, you are present when we gather in your name. Guide congregations in transition or conflict. Give wisdom to congregational councils, call committees, and ministry leaders. Keep us alert to unexpected opportunities for mission. God, in your mercy, **C hear our prayer.**

A God of promise, your goodness is everlasting. We give thanks for the lives of the faithful who now rest in you. We trust that you will bring us into the company of all the saints with rejoicing. God, in your mercy, **C hear our prayer.**

P God of our longing, you know our deepest needs. By your Spirit, gather our prayers and join them with the prayers of all your children. In Jesus' name we pray.

C Amen.

GREAT THANKSGIVING

P The Lord be with you.

C And also with you.

P Lift up your hearts.

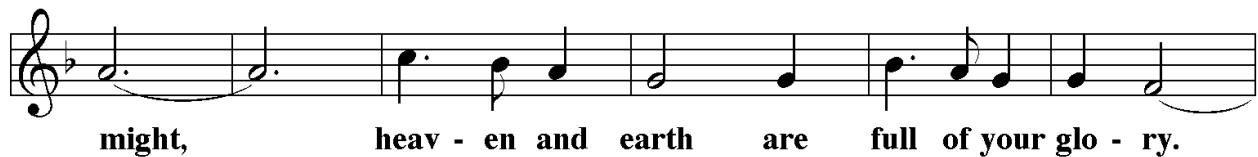
C We lift them to the Lord.

P Let us give thanks to the Lord our God.

C It is right to give our thanks and praise.

PROPER PREFACE

P It is indeed right and salutary that we should at all times and in all places offer thanks and praise to you, O Lord, holy Father, almighty and everliving God. You comforted your people with the promise of the Redeemer, through whom you will also make all things new in the day when he comes again to judge the world in righteousness. And so, with the Church on earth and the hosts of heaven, we praise your name and join their unending hymn:



EUCCHARISTIC PRAYER & WORDS OF INSTITUTION

P Holy God, the Beginning and the End, our Salvation and our Hope, we praise you for creating a world of order and beauty.

When we brought on chaos, cruelty and despair, you sent the prophets to proclaim your justice and mercy.

At this end of the ages your Son Jesus came to bring us your love and to heal all the suffering world.

In the night in which he was betrayed, our Lord Jesus took bread, and gave thanks; broke it, and gave it to his disciples, saying: Take and eat; this is my body, given for you. Do this for the remembrance of me.

Again, after supper, he took the cup, gave thanks, and gave it for all to drink, saying: This cup is the new covenant in my blood, shed for you and for all people for the forgiveness of sin. Do this for the remembrance of me.

Remembering, therefore, his life, death, and resurrection, we await his coming again in righteousness and peace.

Send your Spirit on us and on this bread and wine we share: strengthen our faith, increase our hope, and bring to birth the justice and joy of your Son.

Through hi all glory and honor is yours, Almighty Father, with the Holy Spirit, in your holy Church, both now and forever.

C Amen

LORD'S PRAYER

P Lord, remember us in your kingdom, and teach us to pray:

C Our Father in heaven, hallowed be your name, your kingdom come, your will be done, on earth as in heaven. Give us today our daily bread. Forgive us our sins as we forgive those who sin against us. Save us from the time of trial and deliver us from evil. For the kingdom, the power, and the glory are yours, now and forever. Amen.

THE AGNUS DEI

Lamb of God



C Lamb of God, you take a - way the sin of the world; have mer-cy on



us. Lamb of God, you take a - way the sin of the world; have



mer-cy on us. Lamb of God, you take a - way the



sin of the world; grant us peace, grant us peace.

INVITATION

P Be strong, do not fear! Here is your God, who has come to save you.

BLESSING

P May the body and blood of our Lord Jesus Christ strengthen you and keep you in his grace. **C Amen.**

C Thank - ful hearts and voic - es raise; tell ev - 'ry -
 one what God has done. Let all who seek the
 Lord re - joice and bear Christ's ho - ly name.
 Send us with your prom - is - es, O God, and
 lead us forth in joy with shouts of thanks -
 giv - ing. Al - le - lu - ia.

PRAYER AFTER COMMUNION

A Let us pray... Faithful God, in this meal you have remembered your mercy, bringing heaven to earth in the body and blood of Christ. As we wait for the day when all your promises will be fulfilled, sustain us and strengthen us by this holy mystery.

Guide us toward your promised future, coming to birth in Jesus Christ our Savior and Lord. **C Amen.**

BLESSING

P God the eternal Word, who dwells with us in Jesus, and who holds us in the grace of the Holy Spirit, ✠ bless you now and forever. **C Amen.**

***SENDING SONG**

Soon & Very Soon

ELW # 439



1 Soon and ver - y soon
2 No more cry - in' there, we are goin' to see the King,
3 No more dy - in' there,
4 Soon and ver - y soon



soon and ver - y soon
no more cry - in' there, we are goin' to see the King,
no more dy - in' there,
soon and ver - y soon



soon and ver - y soon
no more cry - in' there, we are goin' to see the King.
no more dy - in' there,
soon and ver - y soon



Hal-le - lu - jah, hal-le - lu - jah, we're goin' to see the King!

Coda after stanza 4



Hal - le - lu - jah, hal - le - lu -



jah, hal - le - lu - jah, hal - le - lu - jah.

Text: Andraé Crouch, b. 1945

Music: VERY SOON, Andraé Crouch

Text and music © 1976 Bud John Songs, Inc./Crouch Music, admin. EMI Christian Music Publishing

Duplication in any form prohibited without permission or valid license from copyright administrator.

Dismissal

P Go in peace. Christ is near. **C Thanks be to God.**

Reprinted from *Evangelical Lutheran Worship* copyright © 2006
Used by permission of Augsburg Fortress license #SB105031

**Please be advised that worship services are recorded and/or
live-streamed on social media.**

Today's Altar Flowers are placed to the Glory of God and in memory of George's mother, Nina Donnelly and given by Martie and George Gilbert.

Serving God and Us

Our Ministers - the People of St. Matthew

Our Pastor – Rev. Traci Marriott

Our Pianist – Dr. Adam Smith

Our Organist – Mary Nelson

Our Missionary Family – On Eagle's Wings, Elizabeth Hendrickson

Our Administrative Assistant – Lori Tremmel

Our Assistant Administrative Assistant – Laura Orzeck

Our Sexton – Phil Claar

Our Lector – Jane Hoenstine

Our Assisting Minister – Melissa Fetzer

Our Acolytes – Gavin Kuster, Norah Kuster, Ben Decker

Our Altar Guild – Janet Stewart, Elaine Bucharth

Our Usher – Tina Harclerode

Our Audio/Video Tech – Camden Kuster

Our Offering Counters – Jim Barley, Beth Garner

Fourth Quarter Ventures in Faith to “*United Lutheran Seminaries*”

Martinsburg Food Pantry

Volunteers distribute food on the first and third Thursdays of the month from 9:00 a.m. until 11:00 a.m.

Several churches will provide Thanksgiving dinner to those that can't prepare a dinner themselves.

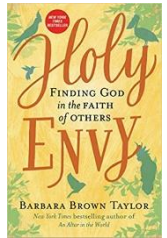
Food most needed for November are: Juice/Beverages, Fruit, Cereal, Mashed Potatoes, Gravy, Stuffing Mix, and Tomato Sauce. Many Thanks! *Linda Smith*

November Book Study—"Holy Envy"

by Barbara Brown Taylor

Join in a series of discussions on "Holy Envy: Finding God in the Faith of Others" narrating how teaching a World Religions class at a local college helped Taylor, a Christian minister, delve deeper into her own faith. Tuesdays at 4 PM on Zoom.

11/29 Chapters 9-Epilogue



This Week at St. Matthew:

814-793-2413

Office Hours

Pastor Traci – Wed. 1:00 – 4:00 p.m.

Lori Tremmel – Mon. – Fri. 9:00 a.m. - 12:00 p.m.

This Week Events

- Today – 1st Sunday in Advent**
Worship in Sanctuary 10:30 a.m.
- Monday – Scouts, Scout Rooms 6:00 p.m.
- Tuesday - Knotty Ladies, Quilt Room 12:30 – 3:00 p.m.
Book Study 4:00 p.m. via Zoom
- Wednesday – Yoga, Fellowship Hall 5:00 p.m.
- Sunday – Sunday School 9:30 a.m.
Worship in Sanctuary 10:30 a.m.

St. Matthew now has a new email address:

stmatthewmartinsburg@gmail.com

Please send all correspondence to this address.

We will no longer use AOL.



Mitten Tree

Our annual Mitten Tree in the narthex starting this Sunday November 27th until December 18th. Please be thinking as you shop, and bring school-age children's mittens, gloves, hats, scarves, earmuffs or socks to be hung on the Mitten Tree. These will be distributed by the school nurses at the Spring Cove Elementary Schools for needy children. Donations of money can be given by marking a **pew envelope "Mitten Tree"**. Let's help children have a warmer Winter!

Cove Christmas Love

It's time to think about children who will get very little or nothing for Christmas. These children within the area covered by the Martinsburg Association of Churches will receive **new** toys, books and blankets with the help of contributions from people in the community.

Please bring your donations to the church and place in the Christmas box located in the Narthex. Monetary contributions are also welcome. Checks are to be made out to "Cove Christmas Love" and placed in the offering plate.

All donations of gifts and monetary contributions are due by Monday, December 12, 2022. *Social Ministry Committee*

Prayers are needed for our homebound: Carl Alexy, Vivian Beach, Verna Blough, Fred Brandenburg, Mary Creps, Gerry Girolami, Betty Helsel, Jere Hess, Ruth Johnson, Audrey & Dan Kensinger, Janet Kreider, Ginny Sell, Dan Sinal, Don Smith, Bill Stahl, Joy Williams.

Prayer Concerns: Amy & Family, Pastor Denise Arpino, Randy Barrett, Verna Blough, David Bolger, Bonnie Brobst, Diane Cappel, Dave Clayton, Greg Comer, Terry & Cathy Creek, Tim Flaugh, Brian Fleck, Jim Fritz, Dan Hershberger, Marilyn Horton, Darren Kreutzer, Carrie Lively, Kristen Malloy, Pastor Traci Marriott, Karrie McCall & Family, Betty McDowell, Kay McGraw, Liam McGregor, Rick McIntyre, Aunt Mica, Charles Minnick & Family, Nathan, Elaine Ormsby, Deb Peters, Paul Ruth, Barbara Smith, Luther Steele, Cindy Thomas, Rev. Jack Timm, John Werner, Jean White, Joel Widmann, Pete Williams, Jody Zelanko, and for our **Missionaries: Rev. Lesley Hand, On Eagle's Wings, Elizabeth Hendrickson.**

Our college students: Christopher Bush, Olivia Day, Camryn Gates.

Those Serving in the Army Overseas: Nathan Smith (Germany), Melody Estep.

Nominating Committee Looking for Council Nominees

The nominating committee is seeking St. Matthew members for several Council positions. Have you been looking for a way to serve at St. Matthew? One of these offices may be just the position for you!

We are in need of a President, Secretary, and Nominating Committee Member.

The President presides at all monthly Council meetings following a prescribed order of business and

conducts annual and special meetings of the congregation.

The Secretary keeps written minutes of the meetings of the congregation and Council.

These offices are for two-year terms, with eligibility to serve a maximum of two consecutive terms.

A Member of the Nominating Committee works with others to recruit a slate of nominees for the next years' open Council positions to be voted on by the congregation at its annual meeting.

The term is two years and the position is not eligible for consecutive re-election.

Please contact the nominating committee for more information:

Martie Gilbert (Chair) 814-793-4461

Peggy Steinfurth 814-515-6205

Peggy Freyer 814-327-0291

Ruth Marshall 814-793-3107



2022 National Youth Gathering Christmas Candy Sale

We are offering our famous:

_____ White Chocolate Peppermint Bark for \$6.00 per half pound

_____ Dark Chocolate Peppermint Bark for \$6.00 per half pound



Orders will be accepted through Friday, December 9, 2022

All proceeds benefit youth attending the 2022 National Youth Gathering.

Payment is due at pick-up Sun., Dec. 18, 2022.

Checks made payable to: St. Matthew Lutheran Church

Name: _____ Phone Number: _____

Please place this form in the offering plate, or return it to the office.



Dear Members of St. Matthew Lutheran Church:

The 2022 Annual Congregational Meeting is scheduled for Sunday, December 11th at 10:30 a.m. Here in, and for your review, is a copy of the 2023 Ministry Proposal (Congregational Budget) for St. Matthew Lutheran Church.

The budget process begins with all committees providing their budget requests to the finance committee, who then review the individual proposals and ultimately agree on a budget. The Finance Committee unanimously approved the 2023 Budget at their meeting on October 26, 2022. Church Council then reviews the budget, and in this case, approved it at their November 8th meeting.

The congregation will also be asked to approve the following 2023 recommendations for Venture in Faith, which are the same as 2022:

- 1) The first quarter will go to local needs.
- 2) The second quarter is for Youth and Camping
- 3) The third quarter will go to On Eagle's Wings & Holy Family Lutheran Church & Rocky Boy Ind. Res.
- 4) The fourth quarter is for the United Lutheran Seminaries both in Gettysburg and Philadelphia.

The congregation will also be asked to approve the 2023 recommendations for Special Envelopes, which are identical to what was used in 2022:

- 1) Easter envelopes go to the Breezewood Truck Ministry.
- 2) Special envelopes for Children's Sunday go to Good Shepherd children's home.
- 3) Harvest Home envelopes go to ALSM (ILUMIN).
- 4) The special envelopes for Blanket Sunday go to Lutheran World relief.
- 5) Christmas envelopes are used for St. Matthew's current expense.

If, after reviewing the budget and the recommendations for Ventures in Faith and Special Envelopes, if you have questions or concerns, there will be a **question and answer session on Sunday, November 27th and December 4th following the 10:30 a.m. worship service in the Sanctuary.** You may also contact Jim Barley by phone (814-793-4623) or by email (jimbarley@gmail.com).

*In response to God's love, St. Matthew Lutheran Church
Shares God's word and serves all people.*

Jim Barley
Finance Committee Chairperson

St. Matthew Lutheran Church Proposed Budget 2023

| | 2023 | 2022 | 2021 | 2020 | 2019 | 2018 | 2017 |
|--------------------------------------------------------|-----------------|-------------|-------------|-------------|-------------|-------------|-------------|
| | Proposed Budget | Budget | Actual | Actual | Actual | Actual | Actual |
| MINISTRY OF THE PASTOR | | | | | | | |
| Base Salary/Housing Allowance | \$ 60,470.00 | \$57,350.00 | \$57,281.04 | \$56,073.12 | \$53,815.12 | \$10,724.32 | \$0.00 |
| Social Security Allowance | \$ 4,626.00 | \$4,387.00 | \$4,290.00 | \$4,198.08 | \$4,039.92 | \$652.84 | \$0.00 |
| Transitional Pastors Stipend | | | | | | \$24,000.75 | \$26,925.00 |
| Total Compensation | \$ 65,096.00 | \$61,737.00 | \$61,571.04 | \$60,271.20 | \$57,855.04 | \$35,377.91 | \$26,925.00 |
| Pension Contribution | \$ 7,812.00 | \$7,409.00 | \$7,244.52 | \$7,088.52 | \$6,822.93 | \$0.00 | \$0.00 |
| Medical | \$ 10,936.00 | \$9,878.00 | \$9,443.16 | \$8,831.46 | \$7,817.92 | \$2,622.64 | \$0.00 |
| Disability and Death | \$ 1,107.00 | \$1,358.00 | \$1,328.16 | \$1,092.84 | \$1,535.03 | \$9.00 | \$0.00 |
| Disability Insurance Supplement | \$ - | | | \$0.00 | \$0.00 | \$0.00 | \$0.00 |
| Retirement Support | \$ - | | | \$413.52 | \$397.44 | \$0.00 | \$0.00 |
| Total Benefits | \$ 19,855.00 | \$18,645.00 | \$18,015.84 | \$17,426.34 | \$16,573.32 | \$2,631.64 | \$0.00 |
| TOTAL COMPENSATION & BENEFITS OF THE PASTOR | \$ 84,951.00 | \$80,382.00 | \$79,586.88 | \$77,697.54 | \$74,428.36 | \$38,009.55 | \$26,925.00 |
| PROFESSIONAL REIMBURSEMENT | | | | | | | |
| Automobile Reimbursement | \$ 2,000.00 | \$3,000.00 | \$940.46 | \$671.95 | \$2,269.68 | \$317.95 | \$400.38 |
| Continuing Ed, Books & Periodicals | \$ 1,000.00 | \$1,000.00 | \$657.29 | \$935.50 | \$1,002.74 | \$77.16 | \$588.53 |
| Assembly/Conference Expense | \$ 600.00 | \$600.00 | \$40.00 | \$25.00 | \$461.00 | \$143.00 | \$426.00 |
| Other Professional Exp | \$ 500.00 | \$1,100.00 | \$90.96 | \$0.00 | \$1,397.38 | \$18.88 | \$12.45 |
| Transition Pastors Mileage and Lodging | \$ - | | | | | \$9,243.52 | \$10,785.42 |
| TOTAL PROFESSIONAL REIMBURSEMENT | \$ 4,100.00 | \$5,700.00 | \$1,728.71 | \$1,632.45 | \$5,130.80 | \$9,800.51 | \$12,212.78 |
| PARISH ADMINISTRATION | | | | | | | |
| Parish Administrative Assistant | \$ 33,600.00 | \$31,992.00 | \$31,897.00 | \$31,200.00 | \$30,599.94 | \$29,618.00 | \$26,367.26 |
| Employer's SS Taxes Parish Admin Ass't | \$ 2,570.00 | \$2,447.00 | \$2,273.44 | \$2,227.35 | \$2,224.38 | \$2,126.44 | \$1,847.69 |
| Employee Benefits Parish Admin Ass't | \$ 11,791.00 | \$13,867.00 | \$13,641.24 | \$13,548.30 | \$13,093.08 | \$14,161.66 | \$11,429.07 |
| Assistant to Administrative Assistant | \$ 1,008.00 | \$3,000.00 | \$1,280.81 | \$641.37 | \$2,064.51 | \$1,697.25 | |
| Employer's SS Taxes Ass't Admin Ass't | \$ 77.00 | \$230.00 | \$92.57 | \$57.23 | \$161.34 | \$112.45 | |
| Office Supplies | \$ 2,000.00 | \$2,000.00 | \$2,017.65 | \$2,132.07 | \$2,956.78 | \$2,586.16 | \$2,718.75 |
| Postage | \$ 1,300.00 | \$1,000.00 | \$1,245.65 | \$1,034.48 | \$1,381.71 | \$1,370.16 | \$1,587.89 |
| Telephone | \$ 3,000.00 | \$3,000.00 | \$2,855.97 | \$2,957.12 | \$2,927.98 | \$2,841.07 | \$1,997.98 |
| Maintenance and Repairs | \$ 1,000.00 | \$1,800.00 | \$0.00 | \$822.06 | \$3,366.35 | \$1,523.26 | \$916.58 |
| Computer Program & Updates | \$ 1,750.00 | \$1,750.00 | \$1,574.85 | \$1,049.47 | \$1,627.00 | \$1,882.91 | \$1,894.09 |
| Copier Lease | \$ 2,604.00 | \$2,604.00 | \$4,134.60 | \$4,134.60 | \$4,134.60 | \$4,150.70 | \$3,960.13 |
| Misc. Expenses | \$ 200.00 | \$200.00 | \$82.67 | \$148.84 | \$0.00 | \$141.70 | \$161.88 |
| TOTAL PARISH ADMINISTRATION | \$ 60,900.00 | \$63,890.00 | \$61,096.45 | \$59,952.89 | \$64,537.67 | \$62,211.76 | \$52,881.32 |

| | | | | | | | | | | | |
|----------------------------------|---------------------|--------------------|--------------------|--------------------|--|--|--|--|--|-------------------|-------------------|
| WORSHIP AND MUSIC | | | | | | | | | | | |
| Supply Pastors Compensation | \$ 1,000.00 | \$1,000.00 | \$350.00 | \$290.82 | | | | | | \$1,063.14 | \$1,575.00 |
| Organists' Stipends | \$ 9,420.00 | \$8,800.00 | \$8,150.00 | \$7,785.00 | | | | | | \$3,950.00 | \$4,282.28 |
| Adult Choir Dir. Stipend | | \$2,250.00 | \$1,600.00 | \$1,100.00 | | | | | | \$0.00 | \$0.00 |
| Organ, Piano, and Carillon | \$ 700.00 | \$700.00 | \$720.00 | \$360.00 | | | | | | \$870.00 | \$350.00 |
| Choir Music | \$ 150.00 | \$150.00 | \$96.34 | (\$50.00) | | | | | | \$34.67 | \$107.24 |
| Worship Supplies | \$ 1,500.00 | \$1,500.00 | \$801.50 | \$1,841.82 | | | | | | \$1,481.25 | \$1,807.78 |
| Devotional Guides | \$ 150.00 | \$150.00 | \$105.01 | \$316.13 | | | | | | \$413.50 | \$396.50 |
| Bulletins | \$ - | \$0.00 | \$0.00 | \$0.00 | | | | | | \$0.00 | \$70.90 |
| Flower Fund | \$ - | \$300.00 | \$0.00 | \$33.40 | | | | | | \$21.95 | \$90.00 |
| Journey to Bethlehem | \$ - | \$0.00 | \$0.00 | \$0.00 | | | | | | \$0.00 | \$591.86 |
| Audio Tech Person | \$ 1,485.00 | \$1,375.00 | \$1,325.00 | | | | | | | | |
| Employer's SS Taxes | \$ 114.00 | \$105.00 | \$63.10 | | | | | | | | |
| TOTAL WORSHIP AND MUSIC | \$ 14,519.00 | \$16,330.00 | \$13,210.95 | \$11,677.17 | | | | | | \$7,834.51 | \$9,271.56 |
| EVANGELISM | | | | | | | | | | | |
| Evangelism Projects | \$ 500.00 | \$1,300.00 | \$435.93 | \$246.07 | | | | | | \$298.20 | \$255.43 |
| TOTAL EVANGELISM | \$ 500.00 | \$1,300.00 | \$435.93 | \$246.07 | | | | | | \$298.20 | \$255.43 |
| FELLOWSHIP | | | | | | | | | | | |
| Fellowship Expenses | \$ 1,000.00 | \$1,500.00 | \$233.07 | \$427.58 | | | | | | \$1,179.11 | \$1,103.23 |
| TOTAL FELLOWSHIP | \$ 1,000.00 | \$1,500.00 | \$233.07 | \$427.58 | | | | | | \$1,179.11 | \$1,103.23 |
| CHRISTIAN EDUCATION | | | | | | | | | | | |
| Synod Assembly (2 delegates) | \$ 400.00 | \$400.00 | \$80.00 | \$0.00 | | | | | | \$286.00 | \$378.00 |
| SCS Christmas Gifts | \$ 100.00 | \$100.00 | \$42.37 | \$0.00 | | | | | | \$38.02 | \$80.07 |
| Vacation Church School | \$ - | \$750.00 | \$500.00 | \$150.00 | | | | | | \$0.00 | \$1,019.41 |
| The Lutheran | \$ 1,000.00 | \$1,200.00 | \$622.67 | \$971.79 | | | | | | \$1,044.98 | \$1,071.40 |
| Curriculum & Supplies | \$ 500.00 | \$1,000.00 | \$480.26 | \$403.35 | | | | | | \$538.31 | \$812.11 |
| St. Matthew Youth Events | \$ 500.00 | \$500.00 | \$172.62 | \$22.43 | | | | | | \$0.00 | \$11.99 |
| National Youth Gathering Advisor | \$ - | \$1,000.00 | \$0.00 | \$0.00 | | | | | | \$1,000.00 | \$0.00 |
| Advent and Lenten Workshop | \$ 200.00 | \$200.00 | \$54.23 | \$0.00 | | | | | | \$0.00 | \$0.00 |
| FBI Background Checks | \$ 100.00 | \$100.00 | \$119.55 | \$35.00 | | | | | | \$61.20 | \$16.00 |
| TOTAL CHRISTIAN EDUCATION | \$ 2,800.00 | \$5,250.00 | \$2,071.70 | \$1,582.57 | | | | | | \$2,968.51 | \$3,388.98 |

| | 2023 | 2022 | 2021 | 2020 | 2019 | 2018 | 2017 |
|-------------------------------------------|----------------------|----------------------|----------------------|----------------------|----------------------|----------------------|----------------------|
| | Proposed Budget | Budget | Actual | Actual | Actual | Actual | Actual |
| PROPERTY MAINTENANCE | | | | | | | |
| Insurance | \$ 5,000.00 | \$5,500.00 | \$4,553.00 | \$4,589.00 | \$4,286.00 | \$7,999.45 | \$5,119.00 |
| Electricity | \$ 9,000.00 | \$10,000.00 | \$7,969.55 | \$7,882.13 | \$12,599.92 | \$13,662.03 | \$14,254.45 |
| Janitorial Services | \$ 16,443.00 | \$15,405.00 | \$12,771.78 | \$15,411.80 | \$14,867.11 | \$14,205.00 | \$15,361.10 |
| Employer's SS Taxes | \$ 1,258.00 | \$1,178.00 | \$1,014.60 | \$1,187.74 | \$1,179.25 | \$1,066.53 | \$1,150.17 |
| Repairs and Maintenance | \$ 2,300.00 | \$3,500.00 | \$2,469.38 | \$595.26 | \$2,529.08 | \$4,762.68 | \$2,787.11 |
| Utilities (Water/Sewer/Gas/Garbage) | \$ 4,000.00 | \$3,500.00 | \$3,606.22 | \$3,106.83 | \$2,850.06 | \$2,572.30 | \$2,081.35 |
| Operating Supplies | \$ 1,200.00 | \$1,200.00 | \$1,108.71 | \$985.90 | \$760.23 | \$596.35 | \$1,074.06 |
| Maint Fees (Snow Plowing & Shoveling) | \$ 1,700.00 | \$1,700.00 | \$1,072.00 | \$516.00 | \$1,384.00 | \$1,754.25 | \$1,205.50 |
| Security | \$ 700.00 | \$700.00 | \$539.88 | \$539.88 | \$539.88 | \$0.00 | \$0.00 |
| TOTAL PROPERTY MAINTENANCE | \$ 41,601.00 | \$42,683.00 | \$35,105.12 | \$34,814.54 | \$40,995.53 | \$46,618.59 | \$43,032.74 |
| STEWARDSHIP | | | | | | | |
| Stewardship Education | \$ 1,000.00 | \$1,000.00 | \$745.20 | \$926.52 | \$920.91 | \$906.47 | \$624.37 |
| Offering Envelopes | \$ 1,000.00 | \$1,000.00 | \$751.50 | \$983.85 | \$665.41 | \$490.03 | \$1,964.41 |
| TOTAL STEWARDSHIP & FINANCE | \$ 2,000.00 | \$2,000.00 | \$1,496.70 | \$1,910.37 | \$1,586.32 | \$1,396.50 | \$2,588.78 |
| SOCIAL MINISTRY | | | | | | | |
| Social Ministry | \$ 300.00 | \$300.00 | \$55.86 | \$0.00 | \$95.54 | \$208.08 | \$0.00 |
| TOTAL SOCIAL MINISTRY | \$ 300.00 | \$300.00 | \$55.86 | \$0.00 | \$95.54 | \$208.08 | \$0.00 |
| MISCELLANEOUS | | | | | | | |
| Miscellaneous | \$ 500.00 | \$500.00 | \$1,107.38 | \$178.74 | \$411.31 | \$393.60 | \$332.15 |
| TOTAL MISCELLANEOUS | \$ 500.00 | \$500.00 | \$1,107.38 | \$178.74 | \$411.31 | \$393.60 | \$332.15 |
| TOTAL EXPENSES | \$ 213,171.00 | \$ 219,835.00 | \$ 196,128.75 | \$ 190,119.92 | \$ 202,587.17 | \$ 170,918.92 | \$ 151,991.97 |
| Average Weekly Needed per Budget | 53 Sundays | 52 Sundays | 52 Sundays | 52 Sundays | 52 Sundays | 52 Sundays | 53 Sundays |
| | \$ 4,022.00 | \$4,227.60 | \$4,287.77 | \$4,299.48 | \$4,096.94 | \$4,413.40 | \$4,181.47 |
| Faith Commitment (Allegheny Synod) | \$ 20,000.00 | \$26,000.00 | \$26,000.00 | \$26,000.00 | \$26,000.00 | \$26,000.00 | \$26,000.00 |
| Note: Faith Commitment (Decrease) is % | 23% | 0.00% | 0.00% | 0.00% | 0.00% | 0.00% | 0.00% |
| Note: Budget Increase (Decrease) is % | -3.03% | -1.40% | -0.27% | 4.94% | -7.17% | 3.56% | 2.50% |

Ventures in Faith for 2023

First quarter will go to local needs; Second quarter is for Youth & Camping; Third quarter OEW's & Holy Family Lutheran Church & Rocky Boy; Fourth quarter is for the United Lutheran Seminaries (Gettysburg & Philadelphia)

Special Envelopes for 2023

Easter - Breezewood Truck Ministry.; Children's Sunday - Good Shepherd Children Home.; Harvest Home - ALSM (ILLUMIN); Blanket Sunday - Lutheran World Relief.; Christmas - St. Matthew Current Expenses.



Dr. Adam Smith, Piano

AN ADVENT CONCERT

7PM - Monday, December 19th
St. Matthew Lutheran Church
 115 East Penn Street, Martinsburg
 Free Admission - Free Will Offering to Benefit
Camp Sequanota



Snow Camp 2023

"Come to the Table"

Friday-Sunday, January 27-29
 Camp Sequanota, Jennerstown PA
 6th - 12th Grade

Games, Crafts, Food, Sledding, Worship, & Learning
 Accommodations in Sequanota's Winterized Cabins
 Register from December 15 to January 20 at www.sequanota.com

\$80-includes food, lodging, materials
 Families are asked to pay \$10; St. Matthew will cover the rest.

Please contact Pastor Traci with any questions.
 Adult Helper(s) Wanted!



Birthday Celebration, Saturday, December 17, 2022 12:00-3:00 p.m.

Janet Kreider will be 90 years young on December 16. Her family is planning a birthday celebration here at St. Matthew in the Fellowship Hall. The congregation is invited. You can RSVP by completing the form below or you can email the church office at: stmatthewmartinsburg@gmail.com by **December 12, 2022**

Menu: Pizza, Assorted Subs, Beverage, and Cup Cakes.

+++++

+



Contact Name: _____

___ # of Adults ___ # of Youth

| | 2023 | 2022 | 2021 | 2020 | 2019 | 2018 | 2017 |
|-------------------------------------------|----------------------|----------------------|----------------------|----------------------|----------------------|----------------------|----------------------|
| | Proposed Budget | Budget | Actual | Actual | Actual | Actual | Actual |
| PROPERTY MAINTENANCE | | | | | | | |
| Insurance | \$ 5,000.00 | \$5,500.00 | \$4,553.00 | \$4,589.00 | \$4,286.00 | \$7,999.45 | \$5,119.00 |
| Electricity | \$ 9,000.00 | \$10,000.00 | \$7,969.55 | \$7,882.13 | \$12,599.92 | \$13,662.03 | \$14,254.45 |
| Janitorial Services | \$ 16,443.00 | \$15,405.00 | \$12,771.78 | \$15,411.80 | \$14,867.11 | \$14,205.00 | \$15,361.10 |
| Employer's SS Taxes | \$ 1,258.00 | \$1,178.00 | \$1,014.60 | \$1,187.74 | \$1,179.25 | \$1,066.53 | \$1,150.17 |
| Repairs and Maintenance | \$ 2,300.00 | \$3,500.00 | \$2,469.38 | \$595.26 | \$2,529.08 | \$4,762.68 | \$2,787.11 |
| Utilities (Water/Sewer/Gas/Garbage) | \$ 4,000.00 | \$3,500.00 | \$3,606.22 | \$3,106.83 | \$2,850.06 | \$2,572.30 | \$2,081.35 |
| Operating Supplies | \$ 1,200.00 | \$1,200.00 | \$1,108.71 | \$985.90 | \$760.23 | \$596.35 | \$1,074.06 |
| Maint Fees (Snow Plowing & Shoveling) | \$ 1,700.00 | \$1,700.00 | \$1,072.00 | \$516.00 | \$1,384.00 | \$1,754.25 | \$1,205.50 |
| Security | \$ 700.00 | \$700.00 | \$539.88 | \$539.88 | \$539.88 | \$0.00 | \$0.00 |
| TOTAL PROPERTY MAINTENANCE | \$ 41,601.00 | \$42,683.00 | \$35,105.12 | \$34,814.54 | \$40,995.53 | \$46,618.59 | \$43,032.74 |
| STEWARDSHIP | | | | | | | |
| Stewardship Education | \$ 1,000.00 | \$1,000.00 | \$745.20 | \$926.52 | \$920.91 | \$906.47 | \$624.37 |
| Offering Envelopes | \$ 1,000.00 | \$1,000.00 | \$751.50 | \$983.85 | \$665.41 | \$490.03 | \$1,964.41 |
| TOTAL STEWARDSHIP & FINANCE | \$ 2,000.00 | \$2,000.00 | \$1,496.70 | \$1,910.37 | \$1,586.32 | \$1,396.50 | \$2,588.78 |
| SOCIAL MINISTRY | | | | | | | |
| Social Ministry | \$ 300.00 | \$300.00 | \$55.86 | \$0.00 | \$95.54 | \$208.08 | \$0.00 |
| TOTAL SOCIAL MINISTRY | \$ 300.00 | \$300.00 | \$55.86 | \$0.00 | \$95.54 | \$208.08 | \$0.00 |
| MISCELLANEOUS | | | | | | | |
| Miscellaneous | \$ 500.00 | \$500.00 | \$1,107.38 | \$178.74 | \$411.31 | \$393.60 | \$332.15 |
| TOTAL MISCELLANEOUS | \$ 500.00 | \$500.00 | \$1,107.38 | \$178.74 | \$411.31 | \$393.60 | \$332.15 |
| TOTAL EXPENSES | \$ 213,171.00 | \$ 219,835.00 | \$ 196,128.75 | \$ 190,119.92 | \$ 202,587.17 | \$ 170,918.92 | \$ 151,991.97 |
| Average Weekly Needed per Budget | 53 Sundays | 52 Sundays | 52 Sundays | 52 Sundays | 52 Sundays | 52 Sundays | 53 Sundays |
| | \$ 4,022.00 | \$4,227.60 | \$4,287.77 | \$4,299.48 | \$4,096.94 | \$4,413.40 | \$4,181.47 |
| Faith Commitment (Allegheny Synod) | \$ 20,000.00 | \$26,000.00 | \$26,000.00 | \$26,000.00 | \$26,000.00 | \$26,000.00 | \$26,000.00 |
| Note: Faith Commitment (Decrease) is % | 23% | 0.00% | 0.00% | 0.00% | 0.00% | 0.00% | 0.00% |
| Note: Budget Increase (Decrease) is % | -3.03% | -1.40% | -0.27% | 4.94% | -7.17% | 3.56% | 2.50% |

Ventures in Faith for 2023

First quarter will go to local needs; Second quarter is for Youth & Camping; Third quarter OEW's & Holy Family Lutheran Church & Rocky Boy; Fourth quarter is for the United Lutheran Seminaries (Gettysburg & Philadelphia)

Special Envelopes for 2023

Easter - Breezewood Truck Ministry.; Children's Sunday - Good Shepherd Children Home.; Harvest Home - ALSM (ILLUMIN); Blanket Sunday - Lutheran World Relief.; Christmas - St. Matthew Current Expenses.

BUILDING A CULTURE OF GENEROSITY

As you think about giving to the church this year, please consider how you can grow in your own generosity.

An idea for someone whose income has gone down in the last year:

Everyone can grow in generosity, even if that means the overall dollars given decreases. Perhaps, if before your income decreased you were giving away 2% of your income, now with income being less, can you find a way to grow the percentage of giving to 3% or 4%. There are people in our congregation who will need to decrease the total dollars given because of loss of work or other reasons.

Other ideas:

1. Systematic giving leads to generosity: For most people, we can grow significantly in our giving just by making our gift on a regular basis. Sign up for automatic giving or just add an amount each week or month. Growing giving by \$1 per day equates to significant growth over the course of the year.
2. An extra gift or two during the year: A story was shared from a congregation that participated in this program last year about someone who said, "I'm not sure what the future holds for me, but for now I am doing okay, so I will double my giving in the month of April". Well, what if we all decided to double our giving one month or even two months next year?
3. Give in a tax efficient way. If you are age 70.5 or older, you are able to give directly from a traditional IRA/401k to the church and have that distribution qualify as your Required Distribution. Or, if you have an appreciated asset, you can give that to the church and avoid capital gains. Please contact the church or your tax professional for all the rules and requirements. Most people find they can be more generous when giving in a tax efficient manner.

BEGINNING A CULTURE OF GENEROSITY

HAVE FAITH AND ASSUME SUFFICIENCY NOT SCARCITY

Human nature teaches us to be concerned with whether we will have enough—enough to live on now, enough for the future, enough for a rainy day. When reasonable and responsible concern turns into anxiety or fear, it may be a sign that we are looking at the world from a perspective of scarcity. Yet all throughout scripture, we encounter not scarcity but a God of abundance.

Our faith teaches us to trust our good and gracious God's promises to provide sufficiently for our needs in the future just as God has provided for us in the past. This is so even when we give away a portion of what we have first been given; in fact, God provides for others in part through our generosity.

Noah, Abraham, and Moses are all examples the Bible gives us of people whom God blessed abundantly when they looked beyond the fear of scarcity and trusted God's promises of sufficient provision. Their stories were written for our instruction and for our assurance. We, too, are invited to give in faith, trusting that God will provide and care for us.



SYNOD YOUTH MISSION TRIP

July 1st-July 8th

JOIN US AS WE DO DISASTER RELIEF IN SARASOTA, FLORIDA



Disaster Clean Up

We will help remove and possibly rebuild designated areas, working with Lutheran Disaster Response, which were hit by Hurricane Ian in Sept 2022.



Engage in your Faith

Every evening, we hope to explore the local community with various excursions which may include some beach fun, sunset worship, devotions, provided by Luther Springs Camp Counselors.



Hand out Meals

We will hand out meals to the local community.



Explore the Community

We also hope to explore Sarasota through snorkeling trip, sunset dolphin excursion or a boat outing. *Dependant on availability



**FOR YOUTH (AGES 15-18)
REGISTRATION WILL BE AVAILABLE
IN JANUARY**

**IF INTERESTED, CONTACT PASTOR
DREW MCCAFFERY**

pastordrew0604@gmail.com



Allegheny Synod
Evangelical Lutheran Church in America