

## *First Sunday of Advent*

**November 28, 2021**

8:30 a.m. Worship in Sanctuary

10:30 a.m. Worship in the Sanctuary



**In response to rising case numbers and in an effort to continue being able to worship in person, we strongly request that everyone mask when inside the building regardless of vaccination status.**

### **Announcements**

#### **\*Confession and Forgiveness**

**☞** Blessed be the Holy Trinity, † one God, who alone does wonders, who lifts up the lowly, who fills the hungry with good things. **☞ Amen.**

**☞** Let us confess our sin, trusting in the tender mercy of our God.

*Silence is kept for reflection.*

**☞** God for whom we wait,

**☞ in the presence of one another, we confess our sin before you. We fail in believing that your good news is for us. We falter in our call to tend your creation. We find our sense of self in material wealth. We fear those different from ourselves. We forget that we are your children and turn away from your love. Forgive us, Blessed One, and assure us again of your saving grace Amen.**

**☞** God, in Christ Jesus, has looked with favor upon you! Through the power of the Holy Spirit, † your sins are forgiven. You are children of the Most High, inheritors of the eternal promise, and recipients of divine mercy. God strengthens you anew to follow the way of peace. **☞ Amen.**

## \*PRAYER OF THE DAY

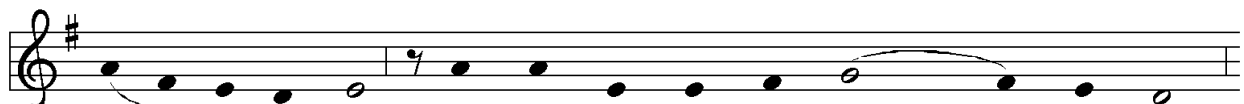
**P** *Let us pray ...* Stir up your power, Lord Christ, and come. By your merciful protection alert us to the threatening dangers of our sins, and redeem us for your life of justice, for you live and reign with the Father and the Holy Spirit, one God, now and forever. **C** Amen.

## \* LIGHTING ADVENT CANDLES

### ADVENT LIGHTING HYMN *O Come O Come Emanuel* (vs 1)



1 O come, O come, Em - man - u - el, and ran - som cap - tive  
2 O come, O Wis - dom from on high, em - brac - ing all things  
3 O come, O come, O Lord of might, as to your tribes on  
4 O come, O Branch of Jes - se, free your own from Sa - tan's



Is - ra - el, that mourns in lone - ly ex - ile here  
far and nigh: in strength and beau - ty come and stay;  
Si - nai's height in an - cient times you gave the law  
tyr - an - ny; from depths of hell your peo - ple save,



un - til the Son of God ap - pear.  
teach us your will and guide our way. Re-joice! Re-joice!  
in cloud, and maj - es - ty, and awe.  
and give them vic - t'ry o'er the grave.



Em - man - u - el shall come to you, O Is - ra - el.

Text: *Psalterium Canticum Catholicarum*, Köln, 1710; tr. composite  
Music: VENI, EMMANUEL, French processional, 15th cent.  
Text sts. 2, 6, 7 © 1997 Augsburg Fortress.

Duplication in any form prohibited without permission or valid license from copyright administrator.

## First Reading: Jeremiah 33:14-16

<sup>14</sup>The days are surely coming, says the LORD, when I will fulfill the promise I made to the house of Israel and the house of Judah. <sup>15</sup>In those days and at that time I will cause a righteous Branch to spring up for David; and he shall execute justice and righteousness in the land. <sup>16</sup>In those days Judah will be saved and Jerusalem will live in safety. And this is the name by which it will be called: "The LORD is our righteousness."

**L** The word of the Lord. **C** Thanks be to God.

**PSALM 25:1-10** (*To be read responsively.*)

<sup>1</sup>To you, O LORD, I lift up my soul.

<sup>2</sup>**My God, I put my trust in you; let me not be put to shame, nor let my enemies triumph over me.**

<sup>3</sup>Let none who look to you be put to shame; rather let those be put to shame who are treacherous.

<sup>4</sup>**Show me your ways, O LORD, and teach me your paths.**

<sup>5</sup>Lead me in your truth and teach me, for you are the God of my salvation; in you have I trusted all the day long.

<sup>6</sup>**Remember, O LORD, your compassion and love, for they are from everlasting.**

<sup>7</sup>Remember not the sins of my youth and my transgressions; remember me according to your steadfast love and for the sake of your goodness, O LORD.

<sup>8</sup>**You are gracious and upright, O LORD; therefore you teach sinners in your way.**

<sup>9</sup>You lead the lowly in justice and teach the lowly your way.

<sup>10</sup>**All your paths, O LORD, are steadfast love and faithfulness to those who keep your covenant and your testimonies.**

### **Second Reading: 1Thessalonians 3:9-13**

<sup>9</sup>How can we thank God enough for you in return for all the joy that we feel before our God because of you? <sup>10</sup>Night and day we pray most earnestly that we may see you face to face and restore whatever is lacking in your faith.

<sup>11</sup>Now may our God and Father himself and our Lord Jesus direct our way to you.

<sup>12</sup>And may the Lord make you increase and abound in love for one another and for all, just as we abound in love for you. <sup>13</sup>And may he so strengthen your hearts in holiness that you may be blameless before our God and Father at the coming of our Lord Jesus with all his saints.

☐ The word of the Lord. ☑ **Thanks be to God.**

**\*Gospel:** Luke 21:25-36

The holy gospel according to John.

**Glory to you, O Lord.**

[Jesus said:] <sup>25</sup>“There will be signs in the sun, the moon, and the stars, and on the earth distress among nations confused by the roaring of the sea and the waves. <sup>26</sup>People will faint from fear and foreboding of what is coming upon the world, for the powers of the heavens will be shaken. <sup>27</sup>Then they will see ‘the Son of Man coming in a cloud’ with power and great glory. <sup>28</sup>Now when these things begin to take place, stand up and raise your heads, because your redemption is drawing near.”

<sup>29</sup>Then he told them a parable: “Look at the fig tree and all the trees; <sup>30</sup>as soon as they sprout leaves you can see for yourselves and know that summer is already near. <sup>31</sup>So also, when you see these things taking place, you know that the kingdom of God is near. <sup>32</sup>Truly I tell you, this generation will not pass away until all things have taken place. <sup>33</sup>Heaven and earth will pass away, but my words will not pass away.

<sup>34</sup>“Be on guard so that your hearts are not weighed down with dissipation and drunkenness and the worries of this life, and that day does not catch you unexpectedly, <sup>35</sup>like a trap. For it will come upon all who live on the face of the whole earth. <sup>36</sup>Be alert at all times, praying that you may have the strength to escape all these things that will take place, and to stand before the Son of Man.”

**☐ The Gospel of the Lord. ☑ Praise to you, O Christ.**

**SERMON**

*Pastor Traci*



1 Peo - ple, look east. The time is near of the crown - ing  
 2 Fur - rows, be glad. Though earth is bare, one more seed is  
 3 Stars, keep the watch. When night is dim, one more light the  
 4 An - gels an - nounce with shouts of mirth him who brings new



of the year. Make your house fair as you are a - ble,  
 plant - ed there. Give up your strength the seed to nour - ish,  
 bowl shall brim, shin - ing be - yond the frost - y weath - er,  
 life to earth. Set ev - 'ry peak and val - ley hum - ming



trim the hearth and set the ta - ble. Peo - ple, look  
 that in course the flow'r may flour - ish. Peo - ple, look  
 bright as sun and moon to - geth - er. Peo - ple, look  
 with the word, the Lord is com - ing. Peo - ple, look



east, and sing to - day— Love, the Guest, is on the way.  
 east, and sing to - day— Love, the Rose, is on the way.  
 east, and sing to - day— Love, the Star, is on the way.  
 east, and sing to - day— Love, the Lord, is on the way.

Text: Eleanor Farjeon, 1881–1965  
 Music: BESANÇON, French carol  
 Text © Miss E. Farjeon Will Trust, by permission of David Higham Associates.

Duplication in any form prohibited without permission or valid license from copyright administrator.

\*CREED

**P** Let us confess our faith through the words of the Apostles' Creed.

**C** I believe in God, the Father almighty, creator of heaven and earth.

**I believe in Jesus Christ, his only Son, our Lord. He was conceived by the power of the Holy Spirit and born of the virgin Mary. He suffered under Pontius Pilate, was crucified, died, and was buried. He descended into hell. On the third day he rose again. He ascended into heaven, and is seated at the right hand of the Father. He will come again to judge the living and the dead.**

**I believe in the Holy Spirit, the holy catholic Church, the communion of saints, the forgiveness of sins, the resurrection of the body, and the life everlasting. Amen**

## **\*Prayers of the Church**

- P** In this season of watching and waiting, let us pray for all people and places that yearn for God's presence.
- P** God of presence and peace, strengthen your church around the globe to proclaim the message of your love coming to the world. Open our hearts to recognize your face in all people and in all of creation. Hear us, O God. **Your mercy is great.**
- P** God of mighty redwoods and microscopic plants, fields and city parks, the wind and the waves, be a healing balm to our wounded planet. May we nurture what you have lovingly created. Hear us, O God. **Your mercy is great.**
- P** God of equity and compassion, bring righteousness and goodness to all peoples of the earth. Give a heart of discernment and integrity to leaders in our communities. Hear us, O God. **Your mercy is great.**
- P** God of comfort and care, be present with those who watch and wait. Come to all who await births, deaths, divorces, new unions, new jobs, retirements, healing, and life transitions of every kind. Hear us, O God. **Your mercy is great.**
- P** God of promises kept and new dreams awakened, shelter your people from destructive storms. We pray for those whose lives have been upended by natural disasters, for the work of Lutheran Disaster Response, Lutheran World Relief, and other relief organizations. Hear us, O God. **Your mercy is great.**
- P** God of companionship and community, we give you thanks for the saints who journeyed with us and now abide in you. Even in distress and uncertainty, make us confident that your promises endure forever. Hear us, O God. **Your mercy is great.**
- P** God of new life, you come among us in the places we least expect. Receive these prayers and those of our hearts, in the name of Jesus. **C Amen.**

## **\*GREAT THANKSGIVING**

- P** The Lord be with you. **C And also with you.**
- P** Lift up your hearts. **C We lift them to the Lord.**
- P** Let us give thanks to the Lord our God.
- C It is right to give our thanks and praise.**

☐ It is indeed right and salutary that we should at all times and in all places offer thanks and praise to you, O Lord, holy Father, almighty and everliving God. You comforted your people with the promise of the Redeemer, through whom you will also make all things new in the day when he comes again to judge the world in righteousness.

### **EUCCHARISTIC PRAYER**

Holy One, the beginning and the end, the giver of life:

Blessed are you for the birth of creation.

Blessed are you in the darkness and in the light.

Blessed are you for your promise to your people.

Blessed are you in the prophets' hopes and dreams.

Blessed are you for Mary's openness to your will.

Blessed are you for your Son Jesus, the Word made flesh.

In the night in which he was betrayed, our Lord Jesus took bread, and gave thanks; broke it, and gave it to his disciples, saying: Take and eat; this is my body, given for you. Do this for the remembrance of me.

Again, after supper, he took the cup, gave thanks, and gave it for all to drink, saying: This cup is the new covenant in my blood, shed for you and for all people for the forgiveness of sin. Do this for the remembrance of me.

Let us proclaim the mystery of faith:

☑ **Christ has died. Christ is risen. Christ will come again.**

With this bread and cup we remember your Word dwelling among us, full of grace and truth. We remember our new birth in his death and resurrection. We look with hope for his coming. ☑ **Come, Lord Jesus.**

Holy God, we long for your Spirit. Come among us. Bless this meal. May your Word take flesh in us. Awaken your people. Fill us with your light. Bring the gift of peace on earth. ☑ **Come, Lord Jesus.**

All praise and glory are yours, Holy One of Israel, Word of God incarnate, Power of the Most High, one God, now and forever. ☑ **Come, Lord Jesus.**

### **\*LORD'S PRAYER**

☐ Lord, remember us in your kingdom, and teach us to pray:

☑ **Our Father, who art in heaven, hallowed be thy name, thy kingdom come, thy will be done, on earth as it is in heaven. Give us this day our daily bread; and forgive us our trespasses, as we forgive those who trespass against us; and lead us not into temptation, but deliver us from evil.**

**For thine is the kingdom, and the power, and the glory, forever and ever. Amen**

**P** Come to Christ's banquet. Feast on God's gift of grace.

## Communion Hymn

### *The King Shall Come*

ELW # 260



1 The King shall come when morn-ing dawns and light tri - um-phant breaks,  
2 Not as of old a lit - tle child, to bear and fight and die,  
3 Oh, bright - er than the ris - ing morn when Christ, vic - to - rious, rose  
4 Oh, bright - er than that glo - rious morn shall dawn up - on our race  
5 The King shall come when morn-ing dawns and light and beau - ty brings.



when beau - ty gilds the east - ern hills and life to joy a - wakes.  
but crowned with glo - ry like the sun that lights the morn-ing sky.  
and left the lone - some place of death, de - spite the rage of foes.  
the day when Christ in splen - dor comes, and we shall see his face.  
Hail, Christ the Lord! Your peo - ple pray: come quick - ly, King of kings.

Text: John Brownlie, 1859–1925

Music: CONSOLATION, A. Davisson, *Kentucky Harmony*, 1816

## Post Communion Prayer

**P** Most High God, you have come among us at this table. By the Spirit's power, form us to be bearers of your word sharing gifts of mercy and grace with all, through Christ Jesus, our host and our guest. **C Amen.**

## Blessing

**P** The God of hope fill us with all joy and peace in believing, so that we may abound in hope by the power of the Holy Spirit, through Christ Jesus for whom we wait.  
**C Amen.**

*Everyone Is Invited To Sing The Sending Hymn While Remaining Masked*





My Lord, what a morn-ing; my Lord, what a morn - ing; oh,



my Lord, what a morn-ing, when the stars be - gin to fall.



- 1 You will hear the trum - pet sound,
- 2 You will hear the sin - ner cry, to wake the na-tions un-der - ground,
- 3 You will hear the Chris-tian shout,



look-ing to my God's right hand, when the stars be-gin to fall.

Text: African American spiritual  
Music: BURLEIGH, African American spiritual

**Dismissal**

**☐** Go in peace. Christ is near. **☑** Thanks be to God.

**Postlude**

Reprinted from *Evangelical Lutheran Worship* copyright © 2006  
Used by permission of Augsburg Fortress license #SB105031

**Please be advised that worship services are recorded and/or live-streamed on social media.**

**Today's Altar Flowers** are placed to the Glory of God and in loving memory of Nina Donnelly by George and Martie Gilbert.

**Advent Devotional Items** are located in the Narthex. Please take them home with you.

## Serving God and Us

Our Pastor – Rev. Traci Marriott

Our Pianist/Organist – Dr. Adam Smith/Mary Nelson

Our Administrative Assistant – Lori Tremmel

Our Assistant Administrative Assistant – Laura Orczeck

Our Sexton – Phil Claar

Our Lector (10:30 a.m.) – Destarta Carberry

Our Acolyte (10:30 a.m.) – Calleigh Wright

Our Audio/Video Tech – Jay Hoenstine

Our Offering Counters – Jim Barley, Beth Garner

**Fourth Quarter Ventures in Faith to “*United Lutheran Seminary*”**

**Prayers are needed for our homebound:** Shirley Acker, Carl & Dawn Alexy, John Aljets, Vivian Beach, Verna Blough, Fred Brandenburg, Clyde Claycomb, Betty Helsel, Jere Hess, Audrey Hite, Ruth Johnson, Audrey & Dan Kensinger, Janet Kreider, Ginny Sell, Dan Sinal, Don Smith, Bill Stahl, Joy Williams.

**Prayer Concerns:** Amy & Family, Pastor Denise Arpino, Diane Baer, Cindy Barnes, Randy Barrett, Diane Cappel, Greg Comer, Brian Fleck, Jim Fritz, Shelby Gerrity, George Gilbert Sr., Dan Hershberger, Joe Hinton, Shearl Hite, Barrett Hoover, Marilyn Horton, Janet Kreider, Darren Kreutzer, Karrie McCall & Family, Betty McDowell, Rick McIntyre, Nathan, Aunt Mica, Murtle Miller, Joan Partner, Deb Peters, Dan Ross, Dorothy Ross, Paul Ruth, Barbara Smith, Don Smith, Luther Steele, Dawn Theofield, Cindy Thomas, Norm Tremmel, Carol Weyandt, Jean White, Pete Williams, Jim & Ginny Zeek, Jody Zelanko, and for our **Missionaries:** **Rev. Lesley Hand, On Eagle’s Wings, Elizabeth Hendrickson.**

**Our college students:** Christopher Bush, Olivia Day, Jacob Orczeck.

**Those Serving in the Army Overseas:** Nathan Smith (Germany)

## Office Hours This Week:

Pastor Traci – Wednesday 1-4 p.m.

Office Hours – Mon.-Fri. - 9:00 a.m.-12:00 p.m. (Lori)

## This Week Events

- Today – Worship in Sanctuary 8:30 a.m.  
Question & Answer Session for 2022 Proposed Budget 9:30 a.m.  
in Sanctuary  
Sunday School 9:30 a.m.  
Worship in Sanctuary 10:30 a.m.
- Monday - Candy Making in the Kitchen 10:00 a.m.-12:00 p.m.  
Worship & Music Meeting via Zoom 6:00 p.m.  
Boy Scouts 6:30 p.m. FH
- Wednesday Yoga 5:00 p.m. FH
- Sunday – Sunday School 9:30 a.m.  
Worship in Sanctuary 10:30 a.m.  
Picture taking in Fellowship Hall for Pictorial Directory,  
following worship

## Worship Schedule for December

In December we will have ONE Sunday service each week.

**10:30AM Worship in the Sanctuary**—Full Spoken Liturgy of Word & Sacrament  
(Communion)

This will be the recorded and live-streamed service.

**Christmas Eve Services: December 24** will have two traditional Candlelight  
Communion Services at 7:00 and 9:00 p.m.

**Sunday, December 26** will be a **recorded service** on Facebook at 10:30 a.m. of the  
Lessons & Carols

### Martinsburg Food Pantry

On Thursday, December 2 and December 16 the food Pantry will be open for  
distribution of food from 9:00 a.m. until 11:00 a.m. Volunteers from participating  
churches will be assisting in the distribution of food, along with the regular  
volunteers. We anticipate many Food Drives in December.

The following food items most needed are: **Canned Meat, Cereal, Scalloped  
Potatoes, Pineapple, & Hamburger Helper.**

Many thanks to all who generously gave to the Food Pantry this year. It is greatly  
appreciated!

*Linda K. Smith*

## Readings for the Week:

**Monday** Psalm 90; Numbers 17:1-11; 2 Peter 3:1-18. **Tuesday (Andrew, Apostle)** 3 Samuel 7:18-29; Revelation 22:12-16. **Wednesday** Isaiah 1:24-31; Luke 11:29-32. **Thursday** Luke 1:68-79; Malachi 3:5-12; Philippians 1:12-18a. **Friday** Luke 11:68-79; Malachi 3:13-18; Philippians 1:18b-26. **Saturday** Luke 1:68-79; Malachi 4:1-6; Luke 9:1-6. **2<sup>nd</sup> Sunday of Advent** Malachi 3:1-4; Luke 1:68-79; Philippians 1:2-11; Luke 3:1-6.



## Coming Soon on November 28, 2021

The first Sunday in Advent is coming soon, and our “*Mitten Tree*” will be in the Narthex!

Please bring elementary school – age children’s mittens, gloves, hats, scarves, earmuffs or socks to be hung on the “*Mitten Tree*” from Sunday, November 28<sup>th</sup> until Sunday, December 19<sup>th</sup>.

These will be distributed by the school nurse at the Spring Cove Elementary Schools for children needing these items. Donations of money can be given by marking a pew envelope “*Mitten Tree*”, and the money will be used to purchase needed items.

*Let’s help children have a warmer winter!*



**New Photo Directory:** Carlos Lamborn will be taking pictures for the new photo directory after the 10:30 a.m. service for the first three (3) Sundays of December. There will be no charge for the pictures and if you would like a copy of the picture so you can have it reproduced just ask Carlos or Mike.

**Name Tags:** In the Narthex are name tags that the Evangelism Committee would like for us to use so we can get to know one another again since the Pandemic. Please return them at the end of the service.



## 2022 National Youth Gathering Christmas Candy Sale

We are offering our famous:

\_\_\_\_\_ White Chocolate Peppermint Bark for \$6.25 per half pound

\_\_\_\_\_ Dark Chocolate Peppermint Bark for \$6.25 per half pound

**Orders will be accepted through FRIDAY, DECEMBER 3, 2021**

**All proceeds benefit youth attending the  
2022 National Youth Gathering.**

**Payment is due at pick-up time, Sunday, December 12, 2021.**

Payment is due at pick-up. Checks made payable to: **St. Matthew Lutheran Church**

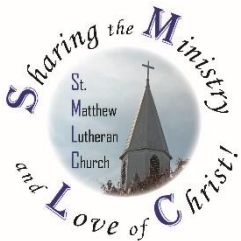
Name: \_\_\_\_\_

Phone Number: \_\_\_\_\_

**Please place this form in the offering plate, or return it to the office.**

### Our Annual Commitment Card

**Please complete the card below and return in the offering plate or to the church office by November 30, 2021.**



#### St. Matthew Evangelical Lutheran Church Stewardship Commitment Card 2022

Mission in the Parish \$ \_\_\_\_\_ (wkly. or mthly) circle one  
(Current Expense)

Mission in the World \$ \_\_\_\_\_ (wkly. or mthly) circle one  
(Benevolence)

Ventures in Faith \$ \_\_\_\_\_ (wkly. or mthly) circle one

Building Fund \$ \_\_\_\_\_ (wkly. or mthly) circle one

**Total Giving** \$ \_\_\_\_\_ (wkly. or mthly) circle one

**(Please circle one) →      Weekly or Monthly**

Name: \_\_\_\_\_ OR 2021 Env. # \_\_\_\_\_

(Please print your name or your offering envelope number.)

#### St. Matthew Ev. Lutheran Stewardship Commitment Card 2022

Mission in the Parish \$ \_\_\_\_\_  
(Current Expense)

Mission in the World \$ \_\_\_\_\_  
(Benevolence)

Ventures in Faith \$ \_\_\_\_\_

Building Fund \$ \_\_\_\_\_

**Total Giving** \$ \_\_\_\_\_

**KEEP THIS SECTION FOR  
YOUR RECORDS**

## **Nominating Committee Needs Volunteers**

**Age:** 18 – 100 years old

**Staff Committee – Kaye Burket** - responsible for conducting the meetings and overseeing the activities and responsibilities of our working employees.

**Social Ministry Committee – Tina Harclerode** - promotes faith in action through social responsibility at the local, state, national and international levels.

**Finance Committee – Jim Barley** – monitors church finances and investments; prepares budget; recommends spending allocations.

**Worship and Music Committee – Jane Fagans** - works with the pastor and music staff to provide meaningful worship experiences.

**Evangelism Committee – Mike Lamborn** -responsible for providing opportunities for and encouraging members to share their faith with each other and with their neighbors.

**Stewardship Committee – Need Volunteer** -encourages members' use of their time, talents and treasures as a response to the generosity of God's love for us.

**Nominating Committee** -- responsible for the new slate of members for Council each year. Usually, meets once in October and November.

Peggy Freyer            Martie Gilbert            Ruth Marshall            Peggy Steinfurth

**Congregational Treasurer – Beth Garner**

The Congregational Meeting is scheduled for Sunday, December 12 during the 10:30 a.m. worship service. If no more volunteers offer to fill the open positions before the meeting then nominations will be taken from the floor.

Please call Peggy Steinfurth at 515-6205 or talk to one of the committee members to volunteer.

**Cove Christmas Love:** The Martinsburg Area Association of Churches are collecting items this year to distribute items to families that are most in need for a blessed Christmas. Prior to the date of distribution, local businesses and churches accept donations of new toys, books, and new blankets. A special checking account is maintained to manage monetary funds designated for this program. St. Matthew has a box in the Narthex marked "**Merry Christmas Cove Christmas Love**".

**Deadline is Monday, December 7<sup>th</sup>.** If you have any questions please call Pastor Chris at Memorial Church of the Brethren at 814-793-2422. Please make checks payable to "**Cove Christmas Love**" and mail to **Pastor Brant Leidy, Martinsburg Grace Brethren Church, 300 S Mulberry St., Martinsburg, PA 16662.**



**Dear Members of St. Matthew Lutheran Church:**

The 2021 Annual Congregational Meeting is scheduled for Sunday, December 12<sup>th</sup> at 10:30 a.m. Here in, and for your review, is a copy of the 2022 Ministry Proposal (Congregational Budget) for St. Matthew Lutheran Church.

The budget process begins with all committees providing their budget requests to the finance committee, who then review the individual proposals and ultimately agree on a budget. Church Council then reviews the budget, and in this case, approved it at their November 9<sup>th</sup> meeting.

The overall budget for 2022 reflects a decrease of 1.4% from 2021. The congregation will be asked to approve this proposed 2022 Budget at the annual meeting.

**The congregation will also be asked to approve the following 2022 recommendations for Venture in Faith, which are the same as 2021:**

- First Quarter- Local Needs
- Second Quarter- Youth and Camping
- Third Quarter- On Eagle's Wings and Missionaries
- Fourth Quarter- United Lutheran Seminary (both Gettysburg and Philadelphia).

**The congregation will also be asked to approve the 2022 recommendations for Special Envelopes, which are identical to what was used in 2021:**

- Easter- Breezewood Truck Ministry
- Children's Sunday- Good Shepherd Children's Home
- Harvest Home- ALSM
- Blanket Sunday- Lutheran World Relief
- Christmas Eve- St. Matthew Current Expense

If, after reviewing the budget and the recommendations for Ventures in Faith and Special Envelopes, if you have questions or concerns, there will be a **question and answer session today, November 28<sup>th</sup> and December 5<sup>th</sup> at 9:30 a.m. in the Sanctuary.** You may also contact Jim Barley by phone (814-793-4623) or by email (jimbarley@gmail.com).

*In response to God's love, St. Matthew Lutheran Church  
Shares God's word and serves all people.*

*Jim Barley  
Finance Committee Chairperson*



St. Matthew Lutheran Church Proposed Budget 2022

	2022 Proposed Budget	2021 Budget	2020 Actual	2019 Actual	2018 Actual
<b>MINISTRY OF THE PASTOR</b>					
Base Salary/Housing Allowance	\$57,350.00	\$56,081.00	\$56,073.12	\$53,815.12	\$10,724.32
Social Security Allowance	\$4,387.00	\$4,290.00	\$4,198.08	\$4,039.92	\$652.84
Transitional Pastors Stipend					\$24,000.75
Total Compensation	\$61,737.00	\$60,371.00	\$60,271.20	\$57,855.04	\$35,377.91
Pension Contribution	\$7,409.00	\$7,245.00	\$7,088.52	\$6,822.93	\$0.00
Medical	\$9,878.00	\$9,478.00	\$8,831.46	\$7,817.92	\$2,622.64
Disability and Death	\$1,358.00	\$1,329.00	\$1,092.84	\$1,535.03	\$9.00
Disability Insurance Supplement			\$0.00	\$0.00	\$0.00
Retirement Support			\$413.52	\$397.44	\$0.00
Health Care Deductible Payment					
Total Benefits	\$18,645.00	\$18,052.00	\$17,426.34	\$16,573.32	\$2,631.64
<b>TOTAL COMPENSATION &amp; BENEFITS OF THE PASTOR</b>	<b>\$80,382.00</b>	<b>\$78,423.00</b>	<b>\$77,697.54</b>	<b>\$74,428.36</b>	<b>\$38,009.55</b>
<b>PROFESSIONAL REIMBURSEMENT</b>					
Automobile Reimbursement	\$3,000.00	\$3,000.00	\$671.95	\$2,269.68	\$317.95
Continuing Ed, Books & Periodicals	\$1,000.00	\$1,000.00	\$935.50	\$1,002.74	\$77.16
Assembly/Conference Expense	\$600.00	\$600.00	\$25.00	\$461.00	\$143.00
Other Professional Exp	\$1,100.00	\$1,100.00	\$0.00	\$1,397.38	\$18.88
Transition Pastors Mileage and Lodging					\$9,243.52
<b>TOTAL PROFESSIONAL REIMBURSEMENT</b>	<b>\$5,700.00</b>	<b>\$5,700.00</b>	<b>\$1,632.45</b>	<b>\$5,130.80</b>	<b>\$9,800.51</b>
<b>PARISH ADMINISTRATION</b>					
Parish Administrative Assistant	\$31,992.00	\$31,272.00	\$31,200.00	\$30,599.94	\$29,618.00
Employer's SS Taxes Parish Admin Ass't	\$2,447.00	\$2,392.00	\$2,227.35	\$2,224.38	\$2,126.44
Employee Benefits Parish Admin Ass't	\$13,867.00	\$13,676.00	\$13,548.30	\$13,093.08	\$14,161.66
Assistant to Administrative Assistant	\$3,000.00	\$2,938.00	\$641.37	\$2,064.51	\$1,697.25
Employer's SS Taxes Ass't Admin Ass't	\$230.00	\$255.00	\$57.23	\$161.34	\$112.45
Office Supplies	\$2,000.00	\$3,000.00	\$2,132.07	\$2,956.78	\$2,586.16
Postage	\$1,000.00	\$1,200.00	\$1,034.48	\$1,381.71	\$1,370.16
Telephone	\$3,000.00	\$3,000.00	\$2,957.12	\$2,927.98	\$2,841.07
Maintenance and Repairs	\$1,800.00	\$1,800.00	\$822.06	\$3,366.35	\$1,523.26
Computer Program & Updates	\$1,750.00	\$1,750.00	\$1,049.47	\$1,627.00	\$1,882.91
Copier Lease	\$2,604.00	\$4,500.00	\$4,134.60	\$4,134.60	\$4,150.70
Misc. Expenses	\$200.00	\$200.00	\$148.84	\$0.00	\$141.70
<b>TOTAL PARISH ADMINISTRATION</b>	<b>\$63,890.00</b>	<b>\$65,983.00</b>	<b>\$59,952.89</b>	<b>\$64,537.67</b>	<b>\$62,211.76</b>
<b>WORSHIP AND MUSIC</b>					
Supply Pastors Compensation	\$1,000.00	\$1,000.00	\$290.82	(\$75.00)	\$1,063.14
Organists' Stipends	\$8,800.00	\$8,200.00	\$7,785.00	\$7,162.40	\$3,950.00
Adult Choir Dir. Stipend	\$2,250.00	\$2,250.00	\$1,100.00	\$250.00	\$0.00
Organ, Piano, and Carillon	\$700.00	\$700.00	\$360.00	\$300.00	\$870.00
Choir Music	\$150.00	\$150.00	(\$50.00)	\$152.60	\$34.67
Worship Supplies	\$1,500.00	\$1,500.00	\$1,841.82	\$2,552.92	\$1,481.25
Devotional Guides	\$150.00	\$400.00	\$316.13	\$259.25	\$413.50
Bulletins	\$0.00	\$0.00	\$0.00	\$0.00	\$0.00
Flower Fund	\$300.00	\$100.00	\$33.40	\$0.00	\$21.95
Journey to Bethlehem	\$0.00	\$500.00	\$0.00	\$501.91	\$0.00
Audio Tech Person	\$1,375.00	\$1,375.00			
Employer's SS Taxes	\$105.00	\$0.00			
<b>TOTAL WORSHIP AND MUSIC</b>	<b>\$16,330.00</b>	<b>\$16,175.00</b>	<b>\$11,677.17</b>	<b>\$11,104.08</b>	<b>\$7,834.51</b>
<b>EVANGELISM</b>					
Evangelism Projects	\$1,300.00	\$1,000.00	\$246.07	\$229.65	\$298.20
<b>TOTAL EVANGELISM</b>	<b>\$1,300.00</b>	<b>\$1,000.00</b>	<b>\$246.07</b>	<b>\$229.65</b>	<b>\$298.20</b>
<b>FELLOWSHIP</b>					
Fellowship Expenses	\$1,500.00	\$1,500.00	\$427.58	\$1,195.21	\$1,179.11
<b>TOTAL FELLOWSHIP</b>	<b>\$1,500.00</b>	<b>\$1,500.00</b>	<b>\$427.58</b>	<b>\$1,195.21</b>	<b>\$1,179.11</b>



	2022 Proposed Budget	2021 Budget	2020 Actual	2019 Actual	2018 Actual
<b>CHRISTIAN EDUCATION</b>					
Synod Assembly (3 delegates)	\$400.00	\$400.00	\$0.00	\$292.00	\$286.00
SCS Christmas Gifts	\$100.00	\$0.00	\$0.00	\$0.00	\$38.02
Rally Day Expenses	\$0.00	\$100.00	\$0.00	\$0.00	\$0.00
After School Fellowship Activities	\$0.00	\$0.00	\$0.00	\$0.00	\$0.00
Vacation Church School	\$750.00	\$1,500.00	\$150.00	\$19.93	\$0.00
Library Expenses	\$0.00	\$0.00	\$0.00	\$0.00	\$0.00
The Lutheran	\$1,200.00	\$1,000.00	\$971.79	\$1,009.14	\$1,044.98
Curriculum & Supplies	\$1,000.00	\$800.00	\$403.35	\$1,287.61	\$538.31
St. Matthew Youth Events	\$500.00	\$500.00	\$22.43	\$205.17	\$0.00
National Youth Gathering Advisor	\$1,000.00	\$0.00	\$0.00	\$0.00	\$1,000.00
Advent and Lenten Workshop	\$200.00	\$200.00	\$0.00	\$0.00	\$0.00
FBI Background Checks	\$100.00	\$100.00	\$35.00	\$58.85	\$61.20
<b>TOTAL CHRISTIAN EDUCATION</b>	<b>\$5,250.00</b>	<b>\$4,600.00</b>	<b>\$1,582.57</b>	<b>\$2,872.70</b>	<b>\$2,968.51</b>
<b>PROPERTY MAINTENANCE</b>					
Insurance	\$5,500.00	\$5,000.00	\$4,589.00	\$4,286.00	\$7,999.45
Electricity	\$10,000.00	\$14,000.00	\$7,882.13	\$12,599.92	\$13,662.03
Janitorial Services	\$15,405.00	\$15,405.00	\$15,411.80	\$14,867.11	\$14,205.00
Employer's SS Taxes	\$1,178.00	\$1,178.00	\$1,187.74	\$1,179.25	\$1,066.53
Repairs and Maintenance	\$3,500.00	\$3,700.00	\$595.26	\$2,529.08	\$4,762.68
Utilities (Water/Sewer/Gas/Garbage)	\$3,500.00	\$3,500.00	\$3,106.83	\$2,850.06	\$2,572.30
Operating Supplies	\$1,200.00	\$1,300.00	\$985.90	\$760.23	\$596.35
Maint Fees (Snow Plowing & Shoveling)	\$1,700.00	\$2,000.00	\$516.00	\$1,384.00	\$1,754.25
Security	\$700.00	\$700.00	\$539.88	\$539.88	\$0.00
Grange Parking Lot			\$0.00	\$0.00	\$0.00
<b>TOTAL PROPERTY MAINTENANCE</b>	<b>\$42,683.00</b>	<b>\$46,783.00</b>	<b>\$34,814.54</b>	<b>\$40,995.53</b>	<b>\$46,618.59</b>
<b>STEWARDSHIP</b>					
Stewardship Education	\$1,000.00	\$1,000.00	\$926.52	\$920.91	\$906.47
Offering Envelopes	\$1,000.00	\$1,000.00	\$983.85	\$665.41	\$490.03
<b>TOTAL STEWARDSHIP &amp; FINANCE</b>	<b>\$2,000.00</b>	<b>\$2,000.00</b>	<b>\$1,910.37</b>	<b>\$1,586.32</b>	<b>\$1,396.50</b>
<b>SOCIAL MINISTRY</b>					
Social Ministry	\$300.00	\$300.00	\$0.00	\$95.54	\$208.08
<b>TOTAL SOCIAL MINISTRY</b>	<b>\$300.00</b>	<b>\$300.00</b>	<b>\$0.00</b>	<b>\$95.54</b>	<b>\$208.08</b>
<b>MISCELLANEOUS</b>					
Miscellaneous	\$500.00	\$500.00	\$178.74	\$411.31	\$393.60
<b>TOTAL MISCELLANEOUS</b>	<b>\$500.00</b>	<b>\$500.00</b>	<b>\$178.74</b>	<b>\$411.31</b>	<b>\$393.60</b>
<b>TOTAL EXPENSES</b>	<b>\$219,835.00</b>	<b>\$222,964.00</b>	<b>\$190,119.92</b>	<b>\$202,587.17</b>	<b>\$170,918.92</b>
	<b>52 Sundays</b>	<b>52 Sundays</b>	<b>52 Sundays</b>	<b>52 Sundays</b>	<b>52 Sundays</b>
Average Weekly Needed per Budget	\$4,227.60	\$4,287.77	\$4,299.48	\$4,096.94	\$4,413.40
<b>Faith Commitment (Allegheny Synod)</b>	<b>\$26,000.00</b>	<b>\$26,000.00</b>	<b>\$26,000.00</b>	<b>\$26,000.00</b>	<b>\$26,000.00</b>
Note: Faith Commitment Increase is %	0.00%	0.00%	0.00%	0.00%	0.00%
Note: Budget Increase (Decrease) is	-1.40%	-0.27%	4.94%	-7.17%	3.56%

**Ventures In Faith:**

1st Quarter – Local Needs; 2nd Quarter – Youth & Camping;  
3rd Quarter – On Eagles' Wings and Missionaries; 4th Quarter – United Lutheran Seminary (both)